

# I-MANUWALI YESIGABA 14

**[Ihlanganiswe ngokuthobela Isigaba 14 seSahluko 2 seNgxenywe 2 yoMthetho Wokugqugquzela Ukutholakala Kolwazi Nombolo 2 (PAIA)]**

## OKUQUKETHWE

INOMBOLO	ISIHLOKO	IKHASI
1.	ISINGENISO	3
2.	INHLOSO NOKUSEBENZA KWEMANUWALI	3
3.	IZINHLAKA NEMISEBENZI KAMASIPALA NGOKWESIGABA 14(1)(A)	3
3.1	IZINHLAKA ZIKAMASIPALA	4
3.2	IMISEBENZI KAMASIPALA	4
4.	IMINININGWANE YOKUXHUMANA YE-INFORMATION OFFICER NE-DEPUTY INFORMATION OFFICER NGOKWESIGABA 14(1)(b)	5
5.	UMKHOMBANDLELA KAKHOMISHANA WAMALUNGelo ABANTU	5
6.	UKUTHOLAKALA KWAMAREKHODI AGCINWE NGUMASIPALA	6
7.	UKUDALULWA KOLWAZI NGOKUZITHANDELA	6
8.	UKUCHAZWA KWEZIHLOKO MEKIKHAKHA YAMAREKHODI AGCINWE WUMASIPALA	6
9.	AMAREKHODI AGCINWE WUMASIPALA	6
10.	INQUBO YOKUFAKA ISICELO	6 - 8
11.	IZINHLELO EZIMAYELANA NOKUVUNYELWA KOMPHAKATHI UKUBAMBA IQHAZA	8-9
12.	OLUNYE ULWAZI NJENGOKUSHO KWESIGABA 14(1)(I)	10

## IZITHASISELO

ISITHASISELO	ISIHLOKO	INOMBOLO YEKHASI
A.	IBALAZWE ELIKHOMBISA IMINGCELE KAMASIPALA WASETHEKWINI	11
B.	UHLAKA OLUKHULU LUKAMASIPALA	12
C.	IZIKHUNGO NGOKWEZIFUNDA	13 - 28
D.	IMIKHAKHA YAMAREKHODI AKHONA ATHOLAKALA NGOKUTHANDA [iSigaba14(1)(e)]	29 - 30
E.	IZIHLOKO NEMIKHAKHA YAMAREKHODI APHETHWE NGUMASIPALA	31 - 33
F.	ISICELO SOKUTHOLA AMAREKHODI ESIGUNGU SIKAHULUMENI	34 - 37
G.	IZIMALI EZIKHOKHWAYO	38
H.	ISAZISO SOKUDLULISA ISINQUMO NGAPHAKATHI	39 - 41

## **1. ISINGENISO**

UMthetho Wokugquzela Ukutholakala Kolwazi, No. 2 ka 2000 (“uMthetho”) waphasiswa mhla ka 3 Febhuwari 2000, lapho kwaqala khona ilungelo elingokomthethosisekelo lokutholakala kwanoma iluphi ulwazi olugcinwe wuMbuso nanoma iluphi ulwazi uphethwe omunye umuntu okumele lusetshenziselwe noma luvikele ilungelo elithile. Uma isicelo sifakwe ngokoMthetho, isigungu okufakwe kuso isicelo siphokelekile ukukhipha ulwazi, ngaphandle uma uMthetho ukusho ukuthi ulwazi kumele lungakhishwa. UMthetho ubeka imigudu okufanele ilandelwe uma kufakwa isicelo.

## **2. INHLOSO NOKUSEBENZA KWEMANUWALI**

Isigaba 14 soMthetho siphoka izinhlaka zikahulumeni ukuba zibe nemanuwali esiza umuntu ukuba athole ulwazi olugcinwe yilolo hlaka lukaHulumeni uphinde uveze lokho okudingekayo ukuze imanuwali ihambisane noMthetho. Njengoba kusho iSigaba 14, imanuwali kumele iqukathe ulwazi olulandelayo:

1. uhlaka kanye nemisebenzi kaMasipala waseThekwini (“uMasipala”);
2. imininingwane yezokuuxhumana;
3. incazelo ngomkhombandlela oshiwo eSigabeni 10 soMthetho, uma ukhona, nokuthi utholakala kanjani;
4. imikhakha yolwazi olukhona olungadingi isicelo esisemthethweni;
5. incazelo yamarekhodi akhona ahambisana nanoma imuphi umthetho;
6. incazelo ngezihloko zamarekhodi kaMasipala kanjalo nemikhakha yamarekhodi akhona kuleso naleso sihloko; kanye
7. nolunye ulwazi olunganqunywa.

Isigaba 9(b)(i) soMthetho siyakuveza ukuthi ilungelo lokuthola ulwazi lingaba nemikhawulo ethile ezwakalayo, ebandakanya phakathi kokunye, umkhawulo wokuvikelwa kolwazi oluyimfihlo, izimfihlo zokuhweba kanjalo nokubusa ngendlela efanele nesebenzayo.

Isigaba 9(b)(ii) soMthetho siphinde siveze ukuthi ilungelo lokuthola ulwazi kumele lisebenze ngendlela engezonyathela amanye amalungelo, okubandakanya lawo malungelo aqukethwe kuSomqulu Wamalungelo kuMthethosisekelo.

Uma kukhulunywa “ngoHlaka lukaHulumeni” kule manuwali kushiwo uMasipala waseThekwini, okuwuhlaka lukaHulumeni ezingeni lohulumeni basekhaya le manuwali ebhalelwe lona.

## **3. IZINHLAKA NEMISEBENZI KAMASIPALA NGOKWESIGABA 14(1)(a)**

‘uMasipala waseThekwini’ kushiwo umuntu ngokomthetho onamandla aqhubekayo njengoba kushiwo eSazisweni sesiFundazwe saKwazulu Natali No. 343 ka 2000. (Isithasiselo A) ngaphansi kwesigaba 12 soMthetho weZinhlaka zoMasipala woHulumeni Basekhaya No. 117 ka 1998. UMasipala uchazwe njengomasipala oseMkhakheni A (uMasipala Omkhulu) ngokoMthetho Wokuklanywa Kwemingcele yoMasipala woHulumeni Basekhaya, No. 27 ka 1998.

## Izinhloko zikaMasipala

UMasipala unoMkhandlu kanye nabasebenzi bawo. Kuba nokhetho njalo eminyakeni emihlanu, kanti ukhetho olulandelayo luzoba ngonyaka ka 2021. Ukhetho luveza ukumeleleka kwamaqembu emkhandlwini kanti njengamanje uMkhandlu unamakhansela angu-219 ahleleke kanje:

<b>I-African National Congress</b>	<b>izihlalo ezingu-126</b>
<b>I-Democratic Alliance</b>	<b>izihlalo ezingu-61</b>
<b>Inkatha Freedom Party</b>	<b>izihlalo ezingu-10</b>
<b>I-Economic Freedom Fighters</b>	<b>izihlalo ezingu-8</b>
<b>I-African Independent Congress</b>	<b>izihlalo ezingu-3</b>
<b>I-Minority Front</b>	<b>izihlalo esisodwa</b>
<b>I-African Christian Democratic Party</b>	<b>izihlalo esisodwa</b>
<b>I-Democratic Liberal Congress</b>	<b>izihlalo esisodwa</b>
<b>I-Minorities of South Africa</b>	<b>izihlalo esisodwa</b>
<b>I-Truly Alliance</b>	<b>izihlalo esisodwa</b>
<b>I-African People's Convention</b>	<b>izihlalo esisodwa</b>
<b>I-AL JAMA-AH</b>	<b>izihlalo esisodwa</b>
<b>Amakhansela Azimele</b>	<b>izihlalo ezingu-4</b>

UMasipala uneMeya enguSihlalo weKomidi Lesigungu eSiphezulu (EXCO) soMkhandlu noSomlomo onguSihlalo woMkhandlu. Ukusebenza kwansuku zonke koMkhandlu kwenziwa amakomidi abika kwi-EXCO bese kuthi izinqumo zawo zigunyazwe wuMkhandlu. Amakomidi abika kwi-EXCO yilawa:

Ikomidi Lezokuthuthukiswa Komnotho Nokuhlelwa Kwedolobha  
Ikomidi Lezomphakathi  
Ikomidi Lezokuphatha Nezindaba Zabasebenzi  
Ikomidi Lezokuhlaliswa Kwabantu Nengqalasizinda  
Ikomidi Lezokuphepha Nezimo Eziphuthumayo

IMenenja yeDolobha iyiNhlolo Yezokuphatha kanti iyona isikhulu esiPhezulu kuMasipala. Ukulandelana kwamazinga amathathu okuqala ezinhloko zikaMasipala njengoba kuveziwe kwiSithasiselo A, kuba iMenenja yeDolobha, iPhini leMenenja yeDolobha kanye neNhlolo yoMnyango.

## Imisebenzi kaMasipala

UMasipala unegunya lokuphatha elingokomthetho futhi unamandla okubusa, ngokwezinhlelo zawo, izinto ezithinta uhulumeni wasekhaya kulowo mphakathi, kubhekwa nemithetho yesifundazwe nekaZwelonke ebalulwe kuMthethosisekelo. Umsebenzi kaMasipala ukufeza izinhloso zawo ngokomthethosisekelo ngokusemandleni awo, ukulawula ezezimali, nokuphatha ukuze wenze imisebenzi edingeka kuhulumeni wasekhaya, okuyilena:

- ukuba uhulumeni ophendulayo emiphakathini futhi onentando yeningi;
- ukuqinisekisa ukuyiswa kwezidingo kubantu ngendlela efanele;
- ukukhuthaza intuthuko emiphakathini nakwezomnotho;
- ukukhuthazwa kwezindawo eziphephile nezinempilo; kanye
- nokukhuthaza ukubandakanywa kwemiphakathi kanye nezinhlangano zomphakathi ezintweni ezithinta uhulumeni wasekhaya.

**4. IMINININGWANE YOKUXHUMANA YE-INFORMATION OFFICER NEPHINI LAYO NGOKWESIGABA 14(1)  
(B)**

**I-Information Officer**

<b>Igama nesikhundla</b>	<b>Ikheli leposi</b>	<b>Ikheli</b>	<b>Inombolo yocingo</b>	<b>Ikheli le-E-mail</b>
<b><u>Mnu. S Nzuz</u></b> IMenenja yeDolobha	PO Box 1014 Durban 4000	City Hall, Dr Pixley KaSeme Street Entrance, Durban	031-3112130/2	<a href="mailto:Sipho.Nzuz@durban.gov.za">Sipho.Nzuz@durban.gov.za</a>

**I-Deputy Information Officer**

<b>Igama nesikhundla</b>	<b>Ikheli leposi</b>	<b>Ikheli</b>	<b>Inombolo yocingo</b>	<b>Ikheli le-E-mail</b>
<b><u>Nks A Seheri</u></b> Inhloko yakwa: City Hall Administration & Secretariat	PO Box 1014 Durban 4000	City Hall, Dr Pixley KaSeme Street Entrance, Durban Room 5	031-3112390/1	<a href="mailto:adele.seheri@durban.gov.za">adele.seheri@durban.gov.za</a>

**Iwebhusayithi**

[www.durban.gov.za](http://www.durban.gov.za)

**Ikheli le-e-Mail**

[sizakala@durban.gov.za](mailto:sizakala@durban.gov.za)

**5. UMHLAHLANDLELA WEKHOMISHANA YAMALUNGELO ABANTU**

Isigaba 10 soMthetho siyalela iKhomishana Yamalungelo Abantu “ukubhala umkhombandlela ngazo zonke izilimi ezisemthethweni ozoba nolwazi ngendlela eqondeka kalula, ukuze kube lula kumuntu ofisa ukuthola ulwazi ngokwelungelo lakhe loMthetho”.

Umkhombandlela ukhona kwa South African Human Rights Commission. Ngemibuzo xhumana nabakwa:

South African Human Rights Commission PAIA Unit  
Research and Documentation Department

**Ikheli leposi:**

Private Bag 2700  
Houghton  
2041

Ucingo: +27 11 8773600  
iFeksi: +27 11 4030625  
Iwebhusayithi: [www.sahrc.org.za](http://www.sahrc.org.za)  
Ikheli le E-mail: [PAIA@sahrc.org.za](mailto:PAIA@sahrc.org.za)

**6. UKUTHOLAKALA KWAMAREKHODI AGCINWE NGUMASIPALA**

**Uhlobo Lwamasevisi**

Uma uMasipala ufeza umsebenzi wawo wokuthuthukisa umphakathi, uhlinzeka amasevisi ngokwesitatimende sombono wawo. Uhlaka lukaMasipala (Bheka Isithasiselo B) luveza imisebenzi

ehlukahlukene eyenziwa uMasipala waseThekwini.

#### **Atholakala kanjani lawa masevisi**

Amasevisi ahlinzekwayo atholakala ngokuya eZikhungweni Zezifunda/ Ezikhungweni ezisiza amakhasimende ezibalwe kwiSithasiselo C nakunoma yiliphi iHhovisi loMnyango othintekayo.

### **7. UKUDALULA ULWAZI NGOKUZITHANDELA**

**Isithasiselo D** sichaza ngemikhakha yamarekhodi ahlale ekhona okungadingi ukuba umuntu aze afake isicelo ngokoMthetho.

### **8. INCAZELO NGEZIHLOKO NEMIKHAKHA YAMAREKHODI AGCINWE NGUMASIPALA**

“Amarekhodi” kaMasipala achazwa njengalawo atholakale noma enziwe ngesikhathi somsebenzi osemthethweni kanti agcinwa njengobufakazi bomsebenzi ngezimali eziphumayo nezingenayo okwenziwa yiDolobha. Kunezinhlobonhlobo zamarekhodi isibonelo imiyalezo, amamephu, amapulani, amarejista, ama-ajenda emihlangano namaminithi emihlangano, lawa marekhodi angagcinwa ezinkundleni zokugcina ulwazi ezahlukene njengephepha, ikhompuyutha noma imibhalo nezithombe.

**Isithasiselo E** sichaza ngezihloko zamarekhodi agcinwe uMasipala kanjalo nomkhakha oqukethwe yilesi naleso sihloko.

### **9. AMAREKHODI AGCINWE NGUMASIPALA**

**Isithasiselo D neSithasiselo E** izona eziqethe wonke amarekhodi aphele ngumasipala.

### **10. INQUBO YOKUFAKA ISICELO**

#### **Ukunikezwa Imvume**

Uma kufakwe isicelo sokuthola amarekhodi noma ulwazi ngokoMthetho, ofake isicelo kumele athole igunya uma kungukuthi ulandela lokhu okungezansi:

- konke okudingwa uMthetho ngokwenqubo mayelana nesicelo sokuthola amarekhodi; nokuthi
- isicelo sokuthola amarekhodi asinqatshwanga ngezizathu ezibalulwe nguMthetho.

#### **Ifomu lokufaka isicelo**

Isicelo kumele sibhalwe phansi efomini elenzelwe lokhu, elinanyathiselwe njengeSithasiselo F bese lithunyelwa kwi:

#### **Information Officer noma i-Deputy Information Officer**

Isicelo kumele sibeke ngokucacile ukuthi ulwazi oludingekayo olwani nokuthi kucelwa ikhophi yerekhodi noma ofake isicelo ufisa ukuzobona irekhodi emahhovisi kaMasipala.

Ifomu lokufaka isicelo kumele lihambisane nemali ebekiwe yokufaka isicelo (ngezimali Bheka **Isithasiselo G.**)

Uma umuntu ecele ukunikwa irekhodi lisesimweni esithile kumele anikezwe ngendlela acele ngayo, ngaphandle uma ukwenza njalo kuzoba nomthelela ongemuhle ngokusebenza kwehhovisi, kungalimaza irekhodi, noma kungabukela phansi amalungelo obunikazi bamarekhodi okungewona akaMasipala.

Uma ofake isicelo efisa ukwaziswa ggesinqumo sesicelo sakhe ngenye indlela, isibonelo ngocingo/ ifeksi/ ikheli le email, ngaphezu kwempendulo ebhalwe phansi, kumele akusho lokhu. Uma kungukuthi ufake isicelo efakela omunye umuntu kumele lokhu kushiwo.

Uma ofake isicelo engakwazi ukufunda nokubhala noma ekhubazekile, angakwazi ukufakwa isicelo ngomlomo.

I-Information Officer noma i-Deputy Information Officer kumele igcwalisele ofake isicelo ifomu.

### **Imali ekhokhwayo**

NgokoMthetho, kunohlobo olubili lwemali okumele ikhokhwe, okuyimali yokufaka isicelo nemali yokuthola amarekhodi.

Ofake isicelo sokuthola amarekhodi anolwazi oluthinta yena akumele akhokhe mali. Noma imuphi omunye ofake isicelo kumele akhokhe imali ebekiwe.

I-Information Officer/ i-Deputy Information Officer iyokwazisa ofake isicelo ukuba akhokhe imali ebekiwe ngaphambi kokuba kuqhutshekwe nesicelo. Imali ekhokhwayo ngu R35. Ofaka isicelo angaphikisana nokukhokhwa kwemali enkantolo.

### **Isinqumo neSaziso**

Ngemuva kokuba i-Information Officer/i-Deputy Information Officer bekiphe isinqumo ngesicelo esifakiwe, ofake isicelo uyokwaziswa zingakapheli izinsuku ezingu 30 kukhishwe isinqumo ngaphandle uma kululwe isikhathi sokubhekisisa isicelo.

Uma isicelo sivunywa, kumele kukhokhwe enye imali yokusithola ukuze sibhekwe, silungiselelwe bese kwenziwa ikhophi yamarekhodi uma kudingeka. Bheka **Isithasiselo G** mayelana ngezimali ezikhokhwayo.

Ofake isicelo uyonikwa ulwazi oludingekayo uma lukhona ngesikhathi ezithile ngemuva kokutholakala kwefomu lokukafaka isicelo nemali ebekiwe.

### **Ukudluliswa Kwesicelo**

Uma kufakwe isicelo sokuthola ulwazi uMasipala ongenalo, noma ulwazi luthintana kakhulu nesikhungo esithile sikahulumeni, isicelo siyodluliswa zingakapheli izinsuku ezingu-14 kwemukelwe isicelo siyiswe kuleso sigungu/isikhungo/inhlangano engakwazi ukuhlinzeka ngalolo lwazi.

### **Amarekhodi angatholakali/angekho**

Uma kungukuthi amarekhodi akatholakali noma akekho kanti sekuthathwe zonke isinyathelo ukuthola amarekhodi aceliwe, i-Information Officer/i-Deputy Information Officer iyokwazisa ofake isicelo ngokubhala isitatimende esifungelwe inikeza isizathu esigcwele.

### **Ukuhlehliswa kokutholakala kwamarekhodi**

Izicelo zingahlehliswa kuze kube ulwazi luyatholakala. Ofake isicelo uyokwaziswa ngendlela efanelekile bese ecelwa ukuphinde enze izethulo zingakapheli izinsuku ezungu-3 ukuthi kungani edinga ulwazi ngaphambi kokuba luvuleleke emphakathini.

### **Ukunqatshelwa Ukuthola Amarekhodi**

I-Information Officer noma i-Deputy Information Officer inganqabela ukutholakala kwamarekhodi uma kungukuthi kunezimo esibalulwe eNgxenyeni 2, eSahlukweni 4 soMthetho.

### **Izinyathelo Zokulungisa**

Izinyathelo zokulungisa ezikhona uma kungukuthi uMasipala awulandeli okushiwo nguMthetho:

Ofake isicelo angadlulisa isinqumo se-Information Officer noma I-Deputy Information Officer ngaphakathi kuMasipala uma kungukuthi:

- Isicelo senqatshiwe
- Imali ebekiwe ukuba ikhokhwe ayemukeleki
- Isikhathi okumele kuthathwe isinqumo ngaso mayelana nokuthola amarekhodi siluliwe

- Ukutholakala kwamarekhodi akubaluliwe efomini lokufaka isicelo
- Omunye umuntu oseceleni angafaka isicelo sokuphikisa isinqumo se-Information Officer noma i-Deputy Information Officer ngaphakathi kuMasipala mayelana nokudalula ulwazi oluthinta umuntu oseceleni.

### **Inqubo Yokudlulisa Izingqomo**

Isicelo sokudlulisa isinqumo ngaphakathi kumele sibhalwe kwifomu elenzelwe lokhu elinanyathiselwe kwiSithasiselo H kulezi zikhathi ezilandelayo ezibekiwe:

- Isikhathi esiyizinsuku ezingu-60;
- Uma Isaziso esiya komunye umuntu oseceleni sidingeka ngokwesigaba 49(1)(b) zingakapheli izinsuku ezingu 30 kunikezwe isaziso ofake isicelo sokuphikisa isinqumo noma uma isaziso esiyakophikisa isinqumo singadingeki sekuthathiwe isinqumo.

### **Ukudluliswa Kwezingqomo Kwangaphakathi**

Kumele kulethwe, kuposwe, kuthunyelwe ngefeksi noma nge-email kwi-Information Officer noma i-Deputy Information Officer.

Kumele kuvezwe izihloko mayelana ngokudlulisa isinqumo ngaphakathi kunikezwe isizathu sokudlulisa isinqumo.

Kumele kuvezwe indlela ophikisa isinqumo afisa ukwaziswa ngayo ngesinqumo esiphume ohlelweni lokudlulisa isinqumo lwangaphakathi, ngaphezu kwempendulo ebhaliwe.

Kumele kuphelezwe imali ebekiwe uma udlulisa isinqumo, uma lokhu kunesidingo.

Kumele kubalulwe ikheli leposi, inombolo yefeksi ngekhele le-email.

I-Information Officer noma i-Deputy Information Officer ngemuva kokuthola isicelo sokudlulisa isinqumo kumele zingakapheli izinsuku ezingu 10 zokusebenza, ihambise lokhu kulowo Ogunyaziwe, okunguSomlomo ukuba abhekisise lokhu.

Isicelo sokudlulisa isinqumo esifike ngemuva kwesikhathi singamukeleka uma kuvezwe isizathu esizwakalayo.

Ofake isicelo noma omunye umuntu oseceleni angafaka isicelo enkantolo kuphela uma kungukuthi uhlelo lokudlulisa isinqumo lwangaphakathi sekudluliwe kulona lwangamvuna.

## **11. IZINHLELO EZIVUMELA UKUBANDAKANYEKA KOMPHAKATHI**

Ukubandakanywa komphakathi kohulumeni basekhaya kulawulwa nguMthetho woHulumeni Basekhaya Wezinhlalo zoMasipala, no 32 ka 2000 kanye noMthetho weZinhlaka Zomasipala no 117 ka 1998. Inhloso yohlelo lokubandakanya umphakathi ukuqinisekisa ukuthi uMasipala nomphakathi wonkana babambe eqhaza elilinganayo kulolu hlelo kanye nomphumela walo.

UMasipala uhlose ukuthi uhlele ukubandakanywa komphakathi ezinhlelweni zawo nasohlelweni lokwenza inqubomgomo ngokubiza imihlangano yomphakathi neyamawadi uma kubuyezwa uHlelo Lwentuthuko Edidiyele (IDP). Lokhu kubuye kusetshenziswe njengehuba lokubuyisela izimpendulo ngamazinga okusebenza azuzwe nguMasipala. Umnyango kaMasipala obizwa ngokuthi i-Community Participation and Action Support usungulelwe ukuthi uxile ekubandakanyeni imiphakathi ezinhlelweni zoMkhandlu ezibandakanya umphakathi nezihlela isabelomali sokugcina onyakeni kanye Nokubuyezwa kwe-IDP ngonyaka.

UMasipala ungasebenzisa lezi zindlela ezilandelayo ukwenza uhlelo lokubandakanya umphakathi:

- Ukusabalalisa imibhalo ezindaweni ezivulelekile emphakathini ukuze uphawule
- Izinhlobo
- Izikhangiso Empahephandabeni
- Imihlangano yemiphakathi esemthethweni
- Imihlangano yemiphakathi, kanye

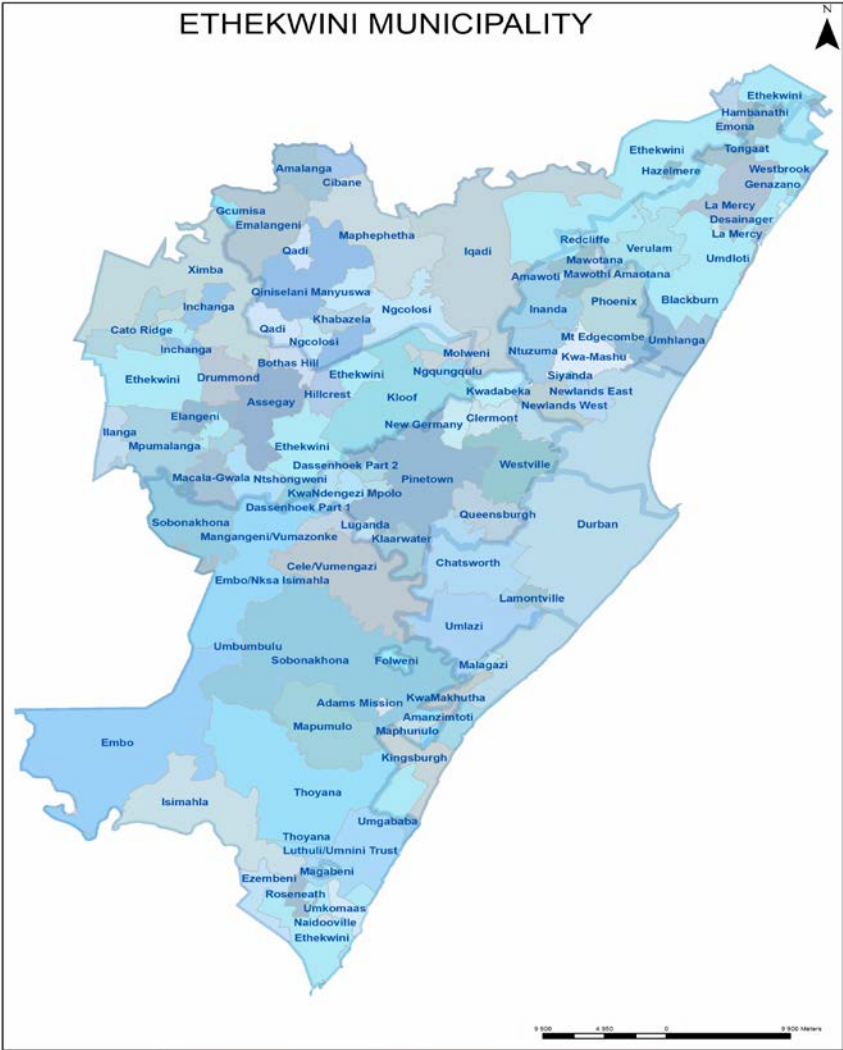


- Nokwakha izinhlaka ezibhekelele ukubandakanyeka komphakathi.

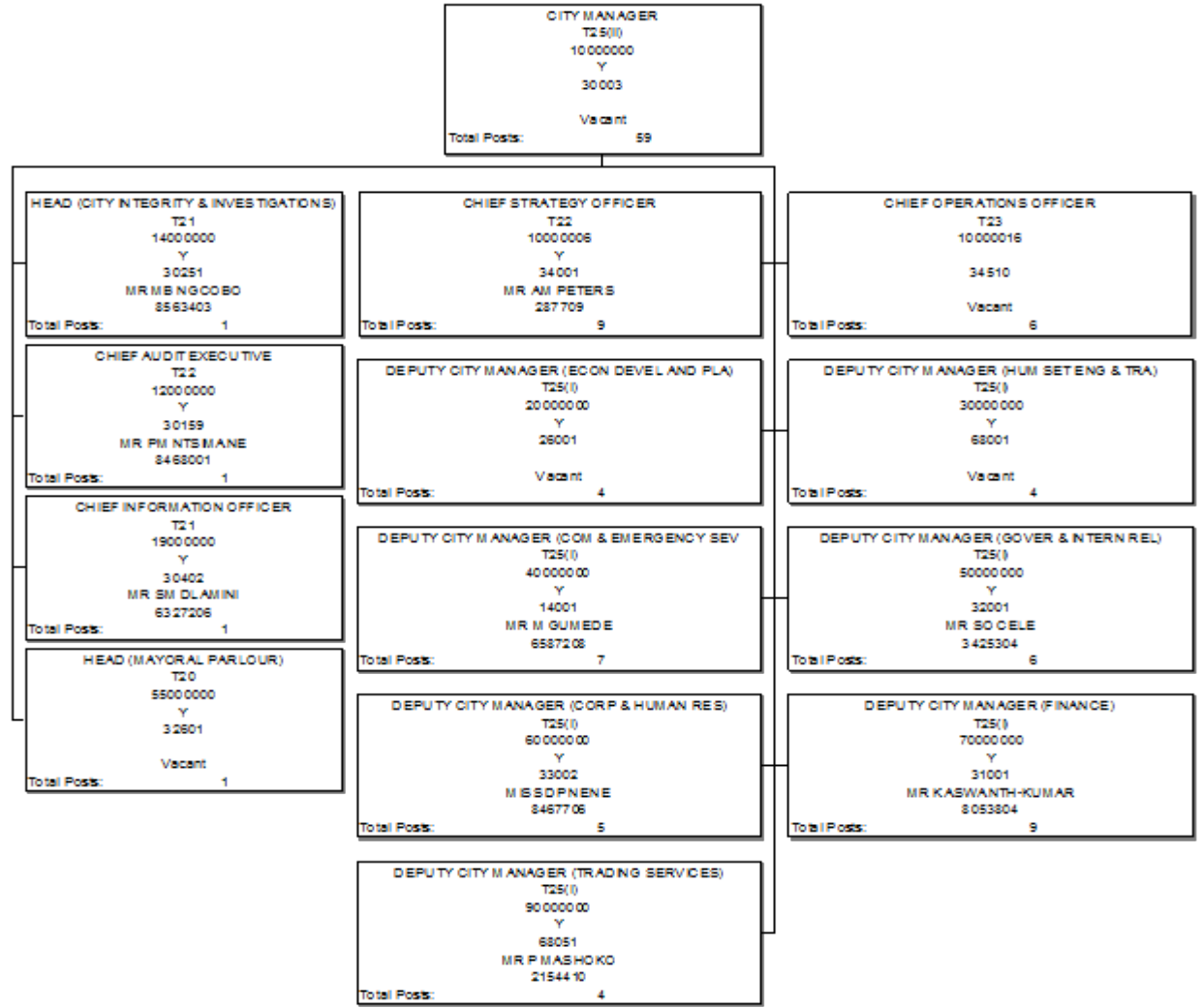
**OLUNYE ULWAZI NJENGOKUSHO KWESIGABA 14(1)(I)**

Alukho ulwazi lungafakwa lapha luvela kuNgqongqoshe Wezobulungiswa nokuthuthukiswa koMthethosisekelo ngokweSigaba 92.

UMGCELE KAMASIPALA WASETHEKWINI



UHLAKA OLUKHULU LUKAMASIPALA WASETHEKWINI- ISIGABA SOKUQALA







**IMINININGWANE YABAPHATHI BAKWA: CUSTOMER SERVICE**

<b>IGAMA LOMUNTU</b>	<b>ISIKHUNDLA</b>	<b>INOMBOLO</b>	<b>IKHELI LEHHOVISI</b>	<b>IKHELI LE-EMAIL</b>
Ntsiki Magwaza	iNhloko yoMnyango	031 3116101	No 60 Kings Road Pinetown Civic Centre	<a href="mailto:Ntsiki.Magwaza@durban.gov.za">Ntsiki.Magwaza@durban.gov.za</a>
Mavuso Tshabalala	iPhini leNhloko	031-3116106	No 60 Kings Road Pinetown Civic Centre	<a href="mailto:Mavuso.Tshabalala@durban.gov.za">Mavuso.Tshabalala@durban.gov.za</a>
Phindile Mdletshe	IBamba likaSenior Manager	031- 3116103	No 60 Kings Road Pinetown Civic Centre	<a href="mailto:Phindile.Mdletshe@durban.gov.za">Phindile.Mdletshe@durban.gov.za</a>
Nonhlanhla Nyathikazi	i-Customer Service Manager: e-West Region	031- 311 6113	No 60 Kings Road Pinetown Civic	<a href="mailto:Nonhla.Nyathikazi@durban.gov.za">Nonhla.Nyathikazi@durban.gov.za</a>
Victus Jama	i-Customer Service Manager: e-North Region	031-3116084 082 456 7168/081 461036	327 Umhlanga Rocks Drive Umhlanga Rocks	<a href="mailto:Victus.Jama@durban.gov.za">Victus.Jama@durban.gov.za</a>
Thabisile Mavusi	i-Customer Service Manager ebambile : e-South Region	031 315 243	Umlazi Megacity 50 Griffith Mxenge Highway Umlazi	<a href="mailto:Thabisile.Ntshingila@durban.gov.za">Thabisile.Ntshingila@durban.gov.za</a>

**IZIKHUNGO ZAKWA-SIZAKALA CUSTOMER SERVICE**

**ENYAKATHO YEDOLOBHA**

<b>NO</b>	<b>IGAMA NEKHELI LESIKHUNGO</b>	<b>UMUNTU OKUXHUNYANWA NAYE</b>	<b>UCINGO</b>	<b>EIKHELI LE-MAIL</b>	<b>IZIDINGO EZIHLINZEKWAYO</b>
1.	<p><b><u>Besters First Stop Shop</u></b></p> <p>Electricity Customer Service Centre CNR mr54 &amp; MR457 Besters</p>	<p><b>U-Supervisor:</b> Dumisani Ntetha</p> <p><b>Abasebenzi abasiza umphakathi:</b> Lindiwe Khuzwayo Slindile Ndaba</p>	031 - 507 2681	<a href="mailto:Dumisani.Ntetha@durban.gov.za">Dumisani.Ntetha@durban.gov.za</a>	<p><b><u>07 IZIDINGO EZIHLINZEKWAYO</u></b></p> <ol style="list-style-type: none"> <li>1. Ukwemukelwa kwezikhalo ngoMasipala</li> <li>2. Ukuqoqwa kwezimali</li> <li>3. ukukhokhwa kwenhlawulo yamathikithi omgwaqo</li> <li>4. Ikhomishana yezokhetho ezimele</li> <li>5. Ezithinta ama-rates</li> <li>6. Ezithinta ama-akhawunti kaMasipala</li> <li>7. Ukwenziwa kwezitatimende ezifungelwe</li> </ol>
2.	<p><b><u>Chesterville</u></b></p> <p>Billing Office Off Wiggins Road Chesterville</p>	<p><b>Supervisor:</b> Dumisani Ntetha</p> <p><b>Abasebenzi abasiza umphakathi:</b> Mandla Nkosi Nonhlanhla Gcwensa</p>	031 - 2640338	<a href="mailto:Dumisani.Ntetha@durban.gov.za">Dumisani.Ntetha@durban.gov.za</a>	<p><b><u>12 IZIDINGO EZIHLINZEKWAYO</u></b></p> <ol style="list-style-type: none"> <li>1. Ukwemukelwa kwezikhalo ngoMasipala</li> <li>2. Ukuqoqwa kwezimali</li> <li>3. Uphiko lwezezindlu</li> <li>4. Ikhomishana yezokhetho ezimele</li> <li>5. Ezithinta ama-akhawunti kaMasipala</li> <li>6. i-Value Assist</li> <li>7. Uhlelo lwe-E-Careers</li> <li>8. Ezamathuna</li> <li>9. Amakhansela</li> <li>10. Uhlelo lwe-EPWP</li> <li>11. Ukwenziwa kwezitatimende ezifungelwe</li> <li>12. Umnyango Wezokuthuthukiswa komphakathi</li> </ol>

NO .	IGAMA NEKHELI LESIKHUNGO	UMUNTU OKUXHUNYANWA NAYE	UCINGO	EIKHELI LE-MAIL	IZIDINGO EZIHLINZEKWAYO
3.	<b><u>KwaMashu</u></b>  Malandela & E1139 Ntombela Road KwaMashu	<b>U</b> Supervisor: Dumisani Ntetha  <b>Abasebenzi abasiza umphakathi:</b> Precious Yika Sibongile Carol Nzuzo Nondono Mthetha Nelisa Ngubane	031-3221819	<a href="mailto:Dumisani.Ntetha@durban.gov.za">Dumisani.Ntetha@durban.gov.za</a>	<b><u>15 IZIDINGO EZIHLINZEKWAYO</u></b> 1. Ukwemukelwa kwezikhalo ngoMasipala 2. Ukuqoqwa kwezimali 3. ukukhokhwa kwenhlawulo yamathikithi omgwaqo 4. Ikhomishana yezokhetho ezimele 5. Business Licencing 6. Uphiko lwezezindlu 7. Ezithinta ama-rates 8. Ezithinta ama-akhawunti kaMasipala 9. Uhlelo lwe-value assist 10. Umnyango wakwa-Business Support 11. Uhlelo lwe-E-Careers 12. Ezamathuna 13. Amakhansela 14. Uhlelo lwe-EPWP 15. Ukwenziwa kwezitatimende ezifungelwe
4.	<b><u>Ntuzuma</u></b>  20 Ntuzuma Access Road Ntuzuma	<b>U</b> -Supervisor: Dumisani Ntetha  <b>Abasebenzi abasiza umphakathi:</b> Nonhlanhla Makhanya Thobile Duma Princess Nxele	031 – 509 5289/ 031 – 509 5286	<a href="mailto:Dumisani.Ntetha@durban.gov.za">Dumisani.Ntetha@durban.gov.za</a>	<b><u>13 IZIDINGO EZIHLINZEKWAYO</u></b> 1. Ukufakwa Kwezicelo zezinsiza zikaMasipala 2. Ukwemukelwa kwezikhalo ngoMasipala 3. Ukukhokhwa kwenhlawulo yamathikithi omgwaqo 4. Ikhomishana yezokhetho ezimele 5. Ezithinta ama-akhawunti kaMasipala 6. Uhlelo lwe-value assist 7. Lapho Kujanjiswa khona Amapulani Okwakha 8. Ezithinta Ukuhlelwa Kwedolobha 9. Amakhansela 10. Ukwenziwa kwezitatimende ezifungelwe



NO .	IGAMA NEKHELI LESIKHUNGO	UMUNTU OKUXHUNYANWA NAYE	UCINGO	EIKHELI LE-MAIL	IZIDINGO EZIHLINZEKWAYO
					11. Abakwa-SASSA 12. Umnyango Wezasekhaya 13. Umnyango Wezenhlalakahle
5.	<b>Phoenix</b>  Billing Office 145 Longcroft Drive Phoenix	<b>USupervisor:</b> Malindi Dlamini  <b>Abasebenzi abasiza umphakathi:</b> Zohara Abdool Susan Sithole Zanele Cele	031 - 311 6018  Fax : 031 - 5009202	<a href="mailto:Malindi.Dlamini@durban.gov.za">Malindi.Dlamini@durban.gov.za</a>	<b><u>15 IZIDINGO EZIHLINZEKWAYO</u></b>  1. Ukwemukelwa kwezikhalo ngoMasipala 2. Ukubhukhwa kwezakhiwo zikaMasipala 3. Ukuqoqwa kwezimali 4. Ukukhokhwa kwenhlawulo yamathikithi omgwaqo 5. Uphiko lwezezindlu 6. Ikhomishana yezokhetho ezimele 7. Ezithinta ama-rates 8. Ezithinta ama-akhawunti kaMasipala 9. Uhlelo lwe-value assist 10. Ezithinta Ukuhlelwa Kwedolobha 11. Umnyango wakwa-Business Support 12. Uhlelo lwe-E-Careers 13. Ezamathuna 14. Amakhansela 15. Ukwenziwa kwezitatimende ezifungelwe
6.	<b>Tongaat</b>  Municipal Office 325 Main Road Tongaat	<b>USupervisor:</b> Ishara Gunpath  <b>Abasebenzi abasiza umphakathi:</b> Zam Mkhize	031 322 1643 031 322 1644 031 322 2843  Fax: 032-9441154	<a href="mailto:ishara.gunphath@durban.gov.za">ishara.gunphath@durban.gov.za</a>  145 Longcroft Drive Phoenix	<b><u>16 IZIDINGO EZIHLINZEKWAYO</u></b>  1. Ukwemukelwa kwezikhalo ngoMasipala 2. Ukubhukhwa kwezakhiwo zikaMasipala 3. Ukuqoqwa kwezimali 4. Ukukhokhwa kwenhlawulo yamathikithi omgwaqo

NO .	IGAMA NEKHELI LESIKHUNGO	UMUNTU OKUXHUNYANWA NAYE	UCINGO	EIKHELI LE-MAIL	IZIDINGO EZIHLINZEKWAYO
		Julie Naidoo			5. Uphiko lwezezindlu 6. Ikhomishana yezokhetho ezimele 7. Ezithinta ama-rates 8. Ezithinta ama-akhawunti kaMasipala 9. Uhlelo lwe-Value Assist 10. Lapho Kuhanjiswa khona Amapulani Okwakha 11. Uhlelo lwe-E-Careers 12. Ezamathuna 13. Amakhansela 14. Uhlelo lwe-EPWP 15. Ukwenziwa kwezitatimende ezifungelwe 16. Umnyango Wezenhlalakahle
7.	<b>Verulam</b>  Market Plaza 151 Wick Street	<b>USupervisor:</b> Malindi Dlamini  <b>Abasebenzi abasiza umphakathi::</b> Meera Subramanian Tracy Reddy Veneshree Gungadu Anesh Mirzeya Mogie Govender	031- 322 1745  031- 322 1768 031- 322 1784 031- 322 1767 031- 311 1780  Fax: 032 - 5337988	<a href="mailto:Malindi.Dlamini@durban.gov.za">Malindi.Dlamini@durban.gov.za</a>	<b>21 IZIDINGO EZIHLINZEKWAYO</b> 1. Ukufakwa Kwezicelo zezinsiza zikaMasipala 2. Ukwemukelwa kwezikhalo ngoMasipala 3. Ukubhukhwa kwezakhiwo zikaMasipala 4. Ukuqoqwa kwezimali 5. ukukhokhwa kwenhlawulo yamathikithi omgwaqo 6. Lapho kwenziwa khona izincwadi zokushayela 7. Lapho kwenziwa Amalayisensi ebhizinisi 8. Uphiko lwezezindlu 9. Ikhomishana yezokhetho ezimele 10. Ezithinta ama-rates 11. Ezithinta ama-akhawunti kaMasipala 12. Uhlelo lwe-Value Assist 13. Lapho Kuhanjiswa khona Amapulani Okwakha 14. Ugesi we-Pre-paid 15. Ezithinta Ukuhlelwa Kwedolobha 16. Umnyango wakwa-Business Support

NO .	IGAMA NEKHELI LESIKHUNGO	UMUNTU OKUXHUNYANWA NAYE	UCINGO	EIKHELI LE-MAIL	IZIDINGO EZIHLINZEKWAYO
					17. Uhlelo lwe-E-Careers 18. Amakhansela 19. Uhlelo lwe-EPWP 20. Ukwenziwa kwezitatimende ezifungelwe 21. Umnyango wakwa-Disaster Management
8.	<b><u>Umhlanga</u></b>  327 Umhlanga Rocks Drive Umhlanga Rocks	<b>USupervisor:</b> Ishara Gunpath  <b>Abasebenzi abasiza            umphakathi:</b> Sandy Beeky Vassie Pillay	031-311 6085 031-311 6993 031-311 6032  Fax: 031- 5611417		<b><u>14 IZIDINGO EZIHLINZEKWAYO</u></b> 1. Ukwemukelwa kwezikhalo ngoMasipala 2. Ukuqoqwa kwezimali 3. Ukukhokhwa kwenhlawulo yamathikithi omgwaqo 4. Ilayisensi yezimoto 5. Ikhomishana yezokhetho ezimele 6. Ezithinta ama-akhawunti kaMasipala 7. Uhlelo lwe-Value Assist 8. Lapho Kuhanjiswa khona Amapulani Okwakha 9. Ezithinta Ukuhlelwa Kwedolobha 10. Uhlelo lwe-E-Careers 11. Ezamathuna 12. Amakhansela 13. Uhlelo lwe-EPWP 14. Ukwenziwa kwezitatimende ezifungelwe
9.	<b><u>Warwick</u></b>  SEDA Centre, 12 Johannes Nkosi Str. Warwick Junction Durban	<b>USupervisor:</b> Dumisani Ntetha  <b>Abasebenzi abasiza            umphakathi::</b> Mzikayise Mlambo Nothile Mndaweni Mondli Ngubane	031- 309 3957	<a href="mailto:Dumisani.Ntetha@durban.gov.za">Dumisani.Ntetha@durban.gov.za</a>	<b><u>08 IZIDINGO EZIHLINZEKWAYO</u></b> 1. Ezithinta ama-akhawunti kaMasipala 2. Ukuqoqwa kwezimali 3. ukukhokhwa kwenhlawulo yamathikithi omgwaqo 4. Ikhomishana yezokhetho ezimele 5. Ezithinta ama-rates 6. Uhlelo lwe-E-Careers 7. Uhlelo lwe-Value Assist 8. Ukwenziwa kwezitatimende ezifungelwe

**SOUTHERN AREA**

NO .	IGAMA NEKHELI LESIKHUNGO	UMUNTU OKUXHUNYANWA NAYE	UCINGO	IKHELI LE-E-MAIL	IZIDINGO EZIHLINZEKWAYO
10.	<b><u>Umlazi Mega City</u></b>  Umlazi Megacity 50 Griffith Highway Umlazi	<b>USupervisor:</b> Thembelihle Mwelase  <b>Abasebenzi abasiza umphakathi:</b> Sandile Dlamini Lucia Malinga Xolani Mzimela Zonke Madonsela Sizwe Gwala Phindile Nyembe Zanele Dlamini Londeka Zindela	0313227822 0313115200 0313115240 0313115199  Fax: 0313115214	<a href="mailto:Senamile.Hadebe@durban.gov.za">Senamile.Hadebe@durban.gov.za</a>	<b><u>13 IZIDINGO EZIHLINZEKWAYO</u></b>  1. Ukwemukelwa kwezikhalo ngoMasipala 2. Ukubhukhwa kwezakhiwo zikaMasipala 3. Ukuqoqwa kwezimali 4. Ukukhokhwa kwenhlawulo yamathikithi omgwaqo 5. Uphiko lwezezindlu 6. Ikhomishana yezokhetho ezimele 7. Ezithinta ama-rates 8. Ezithinta ama-akhawunti kaMasipala 9. Uhlelo lwe-Value Assist 10. Ugesi we-Pre-paid 11. Uhlelo lwe-E-Careers 12. Ezamathuna 13. Ukwenziwa kwezitatimende ezifungelwe
11.	<b><u>South Durban Basin</u></b>  398 Bluff Road Bluff	<b>USupervisor:</b> Senamile Hadebe  <b>Abasebenzi abasiza umphakathi:</b> Sbonelo Nene Skholiwe Msweli	031 - 4011246	<a href="mailto:Senamile.Hadebe@durban.gov.za">Senamile.Hadebe@durban.gov.za</a>	<b><u>07 IZIDINGO EZIHLINZEKWAYO</u></b>  1. Ukwemukelwa kwezikhalo ngoMasipala 2. Ukukhokhwa kwenhlawulo yamathikithi 3. Ikhomishana yezokhetho ezimele 4. Ezithinta ama-akhawunti kaMasipala 5. Uhlelo lwe-Value Assist 6. Uhlelo lwe-E-Careers 7. Ukwenziwa kwezitatimende ezifungelwe
12.	<b><u>Chatsworth</u></b>	Supervisor: Senamile	031 - 3115004	<a href="mailto:Senamile.Hadebe@durban.gov.za">Senamile.Hadebe@durban.gov.za</a>	<b><u>07 IZIDINGO EZIHLINZEKWAYO</u></b>

NO .	IGAMA NEKHELI LESIKHUNGO	UMUNTU OKUXHUNYANWA NAYE	UCINGO	IKHELI LE-E-MAIL	IZIDINGO EZIHLINZEKWAYO
	Finance Office 16 Main Street Township Centre Chatsworth	Hadebe  <b>Abasebenzi abasiza umphakathi:</b> Ntokozo Mkhize Amanda Silangwe			<ol style="list-style-type: none"> <li>1. Ukwemukelwa kwezikhalo ngoMasipala</li> <li>2. Ukubhukhwa kwezakhiwo zikaMasipala</li> <li>3. Ukukhokhwa kwenhlawulo yamathikithi</li> <li>4. Ikhomishana yezokhetho ezimele</li> <li>5. Ezithinta ama-akhawunti kaMasipala</li> <li>6. Uhlelo lwe-Value Assist</li> <li>7. Uhlelo lwe-E-Careers</li> </ol>
13.	<b>Shallcross</b>  265 Shallcross Road, Shallcross	<b>USupervisor:</b> Senamile Hadebe  <b>Abasebenzi abasiza umphakathi:</b> Shireen Govender Padmini Govender	031 - 3112566 031 - 3112567  Fax: 031 - 4094678	<a href="mailto:Senamile.Hadebe@durban.gov.za">Senamile.Hadebe@durban.gov.za</a>	<b>13 IZIDINGO EZIHLINZEKWAYO</b>  <ol style="list-style-type: none"> <li>1. Ukwemukelwa kwezikhalo ngoMasipala</li> <li>2. Ukubhukhwa kwezakhiwo zikaMasipala</li> <li>3. Ukuqoqwa kwezimali</li> <li>4. ukukhokhwa kwenhlawulo yamathikithi</li> <li>5. Ilayisensi yezebhizinisi</li> <li>6. Uphiko Lwezezindlu</li> <li>7. Ikhomishana yezokhetho ezimele</li> <li>8. Ezithinta ama-akhawunti kaMasipala</li> <li>9. Uhlelo lwe-Value Assist</li> <li>10. Uhlelo lwe-E-Careers</li> <li>11. Amakhansela</li> <li>12. Uhlelo lwe-EPWP</li> <li>13. Ukwenziwa kwezitatimende ezifungelwe</li> </ol>
14.	<b>Klaarwater</b>  Ndwadwe St Klaarwater	<b>USupervisor:</b> Senamile Hadebe  <b>Abasebenzi abasiza umphakathi::</b> Thelma Mkhize Sebenzile Hlongwa	031 - 7069609	<a href="mailto:Senamile.Hadebe@durban.gov.za">Senamile.Hadebe@durban.gov.za</a>	<b>09 IZIDINGO EZIHLINZEKWAYO</b>  <ol style="list-style-type: none"> <li>1. Ukwemukelwa kwezikhalo ngoMasipala</li> <li>2. ukukhokhwa kwenhlawulo yamathikithi</li> <li>3. Uphiko Lwezezindlu</li> <li>4. Ikhomishana yezokhetho ezimele</li> <li>5. Ezithinta ama-akhawunti kaMasipala</li> <li>6. Uhlelo lwe-Value Assist</li> <li>7. Amakhansela</li> </ol>

NO .	IGAMA NEKHELI LESIKHUNGO	UMUNTU OKUXHUNYANWA NAYE	UCINGO	IKHELI LE-E-MAIL	IZIDINGO EZIHLINZEKWAYO
					8. Uhlelo lwe-EPWP 9. Ukwenziwa kwezitatimende ezifungelwe
15.	<b><u>Kwa-Mnyandu</u></b>  Shop No. 2368-238 341 Griffith Mxenge H/Way, D1968 Umlazi	<b>USupervisor:</b> Senamile Hadebe  <b>Abasebenzi abasiza umphakathi:</b> Sibusiso Mbatha Sibusiso Mvusi Sonto Sibeko Lihle Mwelase Sizakele Conco Mbongeni Gida Musa Khumalo	031 322 2691 031 322 2693 031 322 2692 031 322 2668 031 322 2827	<a href="mailto:Senamile.Hadebe@durban.gov.za">Senamile.Hadebe@durban.gov.za</a>	<b><u>12 IZIDINGO EZIHLINZEKWAYO</u></b>  1. Ukwemukelwa kwezikhalo ngoMasipala 2. Ukubhukhwa kwezakhiwo zikaMasipala 3. Ukuqoqwa kwezimali 4. ukukhokhwa kwenhlawulo yamathikithi 5. Ikhomishana yezokhetho ezimele 6. Ezithinta ama-Rates 7. Ezithinta ama-akhawunti kaMasipala 8. Uhlelo lwe-Value Assist 9. Ugesi we-Pre-Paid 10. Uhlelo lwe-E-Careers 11. Ezamathuna 12. Ukwenziwa kwezitatimende ezifungelwe
16.	<b><u>Umnini</u></b>  Danganya on R102 Umkhomazi 4170	<b>USupervisor:</b> Mxolisi Ngonelo  <b>Abasebenzi abasiza umphakathi:</b> Busi Mvubu Mbuso Ngidi	031 – 976 0765 031 – 976 0779 031 – 976 0757	<a href="mailto:Mxolisi.Ngonelo@durban.gov.za">Mxolisi.Ngonelo@durban.gov.za</a>	<b><u>12 IZIDINGO EZIHLINZEKWAYO</u></b>  1. Ukwemukelwa kwezikhalo ngoMasipala 2. Ukubhukhwa kwezakhiwo zikaMasipala 3. ukukhokhwa kwenhlawulo yamathikithi 4. Ikhomishana yezokhetho ezimele 5. Ezithinta ama-akhawunti kaMasipala 6. Uhlelo lwe-Value Assist 7. Ugesi we-Pre-Paid 8. Uhlelo lwe-E-Careers 9. Amakhansela 10. Ukwenziwa kwezitatimende ezifungelwe 11. Abakwa-SASSA 12. Umnyango Wezasekhaya

NO .	IGAMA NEKHELI LESIKHUNGO	UMUNTU OKUXHUNYANWA NAYE	UCINGO	IKHELI LE-E-MAIL	IZIDINGO EZIHLINZEKWAYO
					13. Umnyango Wezenhlalakahle 14. Umtapo Wolwazi
17.	<b><u>Craigieburn</u></b>  Municipal Offices 1 Civic Street Craigieburn	<b>Supervisor:</b> Nicky Koekemoer  <b>Abasebenzi abasiza umphakathi:</b> Jacky Smith Tracey Solomon	0313115407 0313115414 0313115408	<a href="mailto:Nicky.Koekemoer@durban.gov.za">Nicky.Koekemoer@durban.gov.za</a>	<b><u>13 IZIDINGO EZIHLINZEKWAYO</u></b>  1. Ukufakwa Kwezicelo zezinsiza zikaMasipala 2. Ukwemukelwa kwezikhalo ngoMasipala 3. Ukubhukhwa kwezakhiwo zikaMasipala 4. Ukuqoqwa kwezimali 5. Ikhomishana yezokhetho ezimele 6. Ezithinta ama-Rates 7. Ezithinta ama-akhawunti kaMasipala 8. Uhlelo lwe-Value Assist 9. Ugesi we-Pre-Paid 10. Ezithinta Ukuhlelwa Kwedolobha 11. Uhlelo lwe-E-Careers 12. Amakhansela 13. Ukwenziwa kwezitatimende ezifungelwe

18.	<b><u>ESipingo</u></b>  3 Police station Road Electricity Building Isipingo 4110	<b>USupervisor:</b> Celimpilo Zungu  Abasebenzi bakwa-Customer Services: Sizakele Ngcobo Nelisiwe Mdletshe Charity Gugushe	Fax: 031-9029801  Tel: 031 - 9023443	<a href="mailto:Celimpilo.Zungu@durban.gov.za">Celimpilo.Zungu@durban.gov.za</a>	<b><u>AMASEVISI AYI-6</u></b>  1. Ukwemukela izikhalazo ngamasevisi kaMasipala 2. Ukuqashiswa kwezakhiwo zikaMasipala 3. I-Value Assist 4. I-E-Careers 5. Amathuna 6. OKhomishane abafungisayo
-----	---	---	---	--	---

19.	<b><u>Kingsburgh</u></b>  11 Mayors Mews Kingsburgh	Celimpilo Zungu  Abasebenzi bakwa- Customer Services: Helen Ndlovu Themba Seshange Tracy Solomon Mbali Mavuso Zinhle Linda Brylan Maddocks	0313115844 0313115835 0313115868 0313115808 0313115826  Fax: 0319162111	<a href="mailto:Celimpilo.Zungu@durban.gov.za">Celimpilo.Zungu@durban.gov.za</a>	<b><u>AMASEVISI AYI-14</u></b>  1. Ukwemukela izikhalazo ngamasevisi kaMasipala 2. Ukuqashiswa kwezakhiwo zikaMasipala 3. Cash Receipts 4. Amathikithi omgwaqo 5. Amalaysensi ebhizinii 6. Ezezindlu 7. I-Independent Electoral Commission 8. Imibuzo ngama-akhawnti amasevisi kaMasipala 9. Value Assist 10. ukulethwa kwamapulani amabhilidi 11. Ugesi wekhadi 12. I-E-Careers 13. Amathuna 14. OKhomishane abafungisayo
20.	<b><u>Lamontville</u></b>  1 Hull Road Old Township Manager's Office Lamontville	<b>USupervisor:</b> Celimpilo Zungu Philane Ndwane Musawenkosi Mjaja	031- 469 1467	<a href="mailto:Celimpilo.Zungu@durban.gov.za">Celimpilo.Zungu@durban.gov.za</a>	<b><u>AMASEVISI AYI -14</u></b>  1. Ukwemukela izikhalazo ngamasevisi kaMasipala 2. Ukuqashiswa kwezinsiza zikaMasipala 3. Amasevisi kakheshi 4. Amathikithi omgwaqo 5. I-independent Electoral Commission 6. IMibuzo ngama-rates 7. Imibuzo ngama-akhawnti amasevisi kaMasipala 8. I-Value Assist 9. I-E-Careers 10. Amathuna 11. OKhomishane abafungisayo 12. South African Social Security Agency 13. UMnyango wakwaNdabazabantu 14. Umnyango WezokuThuthukiswa Komphakathi



21.	<p><b><u>Lovu</u></b></p> <p><b>iLovu Municipal Office</b> Lot 10994 Off R603</p>	<p><b>USupervisor:</b> Celimpilo Zungu</p> <p>Abasebenzi bakwa-Customer Services: Princess Mzimela Thubelihle Mqadi</p>	<p>031- 901 0972 031- 901 074</p>	<p><a href="mailto:Celimpilo.Zungu@durban.gov.za">Celimpilo.Zungu@durban.gov.za</a></p>	<p><b><u>AMASEVISI AYI -13</u></b></p> <ol style="list-style-type: none"> <li>1. Ukwemukela izikhalazo ngamasevisi kaMasipala</li> <li>2. Ukuqashiswa kwezinsiza zikaMasipala</li> <li>3. Amasevisi kakheshi</li> <li>4. Amathikithi omgwaqo</li> <li>5. Amalayisensi ebhizinii</li> <li>6. Ezezindlu</li> <li>7. I-Independent Electoral Commission</li> <li>8. Imibuzo ngama-akhawnti amasevisi kaMasipala</li> <li>9. I-Value Assist</li> <li>10. I-E-Careers</li> <li>11. Ukwesekwa kamaKhansela</li> <li>12. OKhomishane abafungisayo</li> <li>13. Umtapo wolwazi</li> </ol>
22.	<p><b><u>Umbumbulu</u></b></p> <p><b>Road P725 (WORKS) Umbumbulu 4152</b></p>	<p><b>USupervisor:</b> Celimpilo Zungu</p> <p>Abasebenzi bakwa-Customer Services: Sindisiwe Msomi Sithiwe Nxumalo</p>	<p>031- 9150 637</p>	<p><a href="mailto:Celimpilo.Zungu@durban.gov.za">Celimpilo.Zungu@durban.gov.za</a></p>	<p><b><u>AMASEVISI AYI -08</u></b></p> <ol style="list-style-type: none"> <li>1. Ukwemukela izikhalazo ngamasevisi kaMasipala</li> <li>2. Ukuqashiswa kwezinsiza zikaMasipala</li> <li>3. I-Independent Electoral Commission</li> <li>4. I-Value Assist</li> <li>5. I-E-Careers</li> <li>6. Ukwesekwa kamaKhansela</li> <li>7. Uhlelo lwemisebenzi yomphakathi</li> <li>8. OKhomishane abafungisayo</li> </ol>

**WESTERN AREA**

NO .	IGAMA NEKHELI LESIKHUNGO	UMUNTU OKUXHUNYANWA NAYE	UCINGO	IKHELI LE-E-MAIL	IZIDINGO EZIHLINZEKWAYO
23.	<b><u>E-Pinetown</u></b>  60 Kings Road Pinetown	<b>USupervisor:</b> Bongiwe Ndlovu  <b>Abasebenzi bakwa-Customer Services:</b> Nonhlanhla Makhoba Xoliswa Hlongwa Mbuso Mkhwanazi	031-3116114 031 311 6286 031-3116115	<a href="mailto:Bongiwe.Ndlovu@durban.gov.za">Bongiwe.Ndlovu@durban.gov.za</a>	<b><u>AMASEVISI AYI-18</u></b>  1. Ukwemukela izikhalazo ngamasevisi kaMasipala 2. Ukuqashiswa kwezinsiza zikaMasipala 3. Amasevisi kakheshi 4. Amathikithi omgwaqo 5. Amalayisensi ebhizinii 6. Ezezindlu 7. i-Independent Electoral Commission 8. Imibuzo ngama-rates 9. Imibuzo ngama-akhawnti amasevisi kaMasipala 10. I-Value Assist 11. Ukwemukela abapulani ezakhiwo 12. Ugesi wekhadi 13. Imibuzo mayelana nezokuhlelwa kwedolobha 14. Ukwesekwa kwamabhilidi 15. I-E-Careers 16. Amathuna 17. Ukweseka uMkhandlu 18. OKhomishane abafungisayo
24.	<b><u>KwaDabeka</u></b>  KwaDabeka Hostel Complex	<b>USupervisor:</b> Thabisile Mavuso  <b>Abasebenzi bakwa-Customer Services:</b> Ntombifuthi Ndlazi Nonhle Xaba Thandiwe Blose	031 3112600 031 3112605	<a href="mailto:Thabisile.Ntshingila@durban.gov.za">Thabisile.Ntshingila@durban.gov.za</a>	<b><u>AMASEVISI AYI--11</u></b>  1. Ukwemukela izikhalazo ngamasevisi kaMasipala 2. Ukuqashiswa kwezinsiza zikaMasipala 3. Amasevisi kakheshi 4. amathikithi omgwaqo 5. Ezezindlu 7. i-Independent Electoral Commission

NO	IGAMA NEKHELI LESIKHUNGO	UMUNTU OKUXHUNYANWA NAYE	UCINGO	IKHELI LE-E-MAIL	IZIDINGO EZIHLINZEKWAYO
					7. Imibuzo ngama-akhawnti amasevisi kaMasipala 8. Ugesi wekhadi 9. Amathuna 10. Ukwesekwa koMkhandlu 11. OKhomishane abafungisayo
25.	<b><u>Archie Gumede Thusong</u></b>  1106 Zazi Road Clermont	<b>USupervisor:</b> Chris Hlatswayo  <b>Abasebenzi bakwa-Customer Services</b> Zandile Sikhakhane Buhle Njoko Mpume Thusi Nonjabulo Makhanya (intern) Lwazi Mhlungu (Intern)	031-3112549 031-3112561  Fax: 0317071680	<a href="mailto:Chris.Hlatswayo@durban.gov.za">Chris.Hlatswayo@durban.gov.za</a>	<b><u>AMASEVISI AYI-11</u></b>  1. Ukwemukela izikhalazo ngamasevisi kaMasipala 2. Ukuqashiswa kwezinsiza zikaMasipala 3. Amathikithi omgwaqo 4. I-Independent Electoral Commission 5. Imibuzo ngama-akhawnti amasevisi kaMasipala 6. I-E-Careers 7. Ukwesekwa koMkhandlu 8. OKhomishane abafungisayo 9. South African Social Security Agency 10. Department of Social Development 11. Department of Home Affairs
26.	<b><u>Zwelibomvu</u></b>  41333 Old Richmond Road Zwelibomvu	<b>USupervisor:</b> Thabisile Mavuso  <b>Abasebenzi bakwa-Customer Services</b> Ayanda Vezi Lwazi Mhlungu	031 703 6500 031 703 6511	<a href="mailto:Thabisile.Ntshingila@durban.gov.za">Thabisile.Ntshingila@durban.gov.za</a>	<b><u>AMASEVISI AYI-10</u></b>  1. Isicelo sokuthola amasevisi kaMasipala 2. Ukuphathwa kwezikhalazo ngamasevisi kaMasipala 3. Amasevisi kakheshi 4. Amalaysensi ebhizinii 5. Ezezindlu 6. I-Independent Electoral Commission 7. Ugesi wekhadi

NO .	IGAMA NEKHELI LESIKHUNGO	UMUNTU OKUXHUNYANWA NAYE	UCINGO	IKHELI LE-E-MAIL	IZIDINGO EZIHLINZEKWAYO
					8. Amathuna 9. Ukwesekwa koMkhandlu 10. OKhomishane abafungisayo
27.	<b><u>Mpumalanga</u></b>  Township Manager Office Shezi Road Mpumalanga	<b>USupervisor:</b> Philani Nyawose  <b>Abasebenzi bakwa-Customer Services:</b>  Joseph Kweyama Dumisani Hlophe	031-3112683 031-3112685  Fax: 0317710052	<a href="mailto:Philani.Nyawose@durban.gov.za">Philani.Nyawose@durban.gov.za</a>	<b><u>AMASEVISI AYI-10</u></b> 1. Ukwemukela izikhalazo ngamasevisi kaMasipala 2. Ukuqashiswa kwezinsiza zikaMasipala 3. Amathikithi omgwaqo 4. Ezezindlu 5. Independent Electoral Commission 6. Building Plans Submissions 7. I-E-Careers 8. Amathuna 9. Uhlelo lwemisebenzi yomphakathi 10. OKhomishane abafungisayo
28.	<b><u>Nagina</u></b>  3 Soni Road Nagina Pinetown South	<b>USupervisor:</b> Thabisile Mavuso  <b>Abasebenzi bakwa-Customer Services:</b>  Joseph Kweyama Dumisani Hlophe	031-7065823 031-7065824 031-7065825	<a href="mailto:Thabisile.Ntshingila@durban.gov.za">Thabisile.Ntshingila@durban.gov.za</a>	<b><u>AMASEVISI AYI-12</u></b> 1. Ukwemukela izikhalazo ngamasevisi kaMasipala 2. Ukuqashiswa kwezinsiza zikaMasipala 3. Amasevisi kakheshi 4. Amathikithi omgwaqo 5. Amalayisensi ebhizinii 6. I-independent Electoral Commission 7. Imibuzo ngama-rates 8. Imibuzo ngama-akhawnti amasevisi kaMasipala 9. Value Assist 10. Amathuna 11. Ukwesekwa koMkhandlu 12. OKhomishane abafungisayo
29.	<b><u>Ntshongweni</u></b>	<b>USupervisor:</b> Thabisile Mavuso	031 775 1409	<a href="mailto:Thabisile.Ntshingila@durban.gov.za">Thabisile.Ntshingila@durban.gov.za</a>	<b><u>AMASEVISI AYI-08</u></b> 1. Ukwemukela izikhalazo ngamasevisi kaMasipala

NO .	IGAMA NEKHELI LESIKHUNGO	UMUNTU OKUXHUNYANWA NAYE	UCINGO	IKHELI LE-E-MAIL	IZIDINGO EZIHLINZEKWAYO
	Community Hall	<b>Abasebenzi bakwa-Customer Services:</b> Sifiso Ngcongo Vusi Nkosi			<ol style="list-style-type: none"> <li>2. Ukuqashiswa kwezinsiza zikaMasipala</li> <li>3. I-Independent Electoral Commission</li> <li>4. Imibuzo ngama-akhawnti amasevisi kaMasipala</li> <li>5. Ugesi wekhadi</li> <li>6. Amathuna</li> <li>7. Ukwesekwa koMkhandlu</li> <li>8. OKhomishane abafungisayo</li> </ol>
30.	<b><u>Sankontshe</u></b>  Municipal Building	<b>USupervisor:</b> Philani Nyawose	073 504 3796 031 – 772 1871	<a href="mailto:Thabisile.Ntshingila@durban.gov.za">Thabisile.Ntshingila@durban.gov.za</a>	<b><u>AMASEVISI AYI-08</u></b> <ol style="list-style-type: none"> <li>1. Ukwemukela izikhalazo ngamasevisi kaMasipala</li> <li>2. Amathikithi omgwaqo</li> <li>3. I-Independent Electoral Commission</li> <li>4. Imibuzo ngama-akhawnti amasevisi kaMasipala</li> <li>5. Ugesi wekhadi</li> <li>6. Amathuna</li> <li>7. Ukwesekwa koMkhandlu</li> <li>8. OKhomishane abafungisayo</li> </ol>
31.	<b><u>Molweni</u></b>  415 Bhejane Road Molweni	<b>USupervisor:</b> Chris Hlatshwayo  <b>Abasebenzi bakwa-Customer Services:</b> Maureen Ntshangase	031 776 3053	<a href="mailto:Chris.Hlatshwayo@durban.gov.za">Chris.Hlatshwayo@durban.gov.za</a>	<b><u>AMASEVISI AYI-09</u></b> <ol style="list-style-type: none"> <li>1. Ukwemukela izikhalazo ngamasevisi kaMasipala</li> <li>2. Ukuqashiswa kwezinsiza zikaMasipala</li> <li>3. Amathikithi omgwaqo</li> <li>4. I-Independent Electoral Commission</li> <li>5. Imibuzo ngama-akhawnti amasevisi kaMasipala</li> <li>6. Ugesi wekhadi</li> <li>7. Amathuna</li> <li>8. Ukwesekwa koMkhandlu</li> <li>9. OKhomishane abafungisayo</li> </ol>

NO .	IGAMA NEKHELI LESIKHUNGO	UMUNTU OKUXHUNYANWA NAYE	UCINGO	IKHELI LE-E-MAIL	IZIDINGO EZIHLINZEKWAYO
32.	<b><u>Emaphephetheni</u></b>  <b><u>Next to Post Office</u></b>	<b>USupervisor:</b> Chris Hlatswayo  <b>Abasebenzi bakwa-Customer Services:</b> Thobani Gwala	076 245 2796	<a href="mailto:Chris.hlatshwayo@durban.gov.za">Chris.hlatshwayo@durban.gov.za</a>	<b><u>AMASEVISI AYI-11</u></b>  1. Ukwemukela izikhalazo ngamasevisi kaMasipala 2. Ukuqashiswa kwezinsiza zikaMasipala 3. Amasevisi kakheshi 4. Amathikithi omgwaqo 5. Amalaysensi ebhizinii 6. Ezezindlu 7. I-Independent Electoral Commission 8. Ugesi wekhadi 9. Amathuna 10. Ukwesekwa koMkhandlu 11. OKhomishane abafungisayo
33.	<b><u>Fredville</u></b>  Michael Gwala Community Centre	<b>USupervisor:</b> Philani Nyawose  <b>Abasebenzi bakwa-Customer Services:</b> Zethu Gasa	083 583 3873 031 312 9669	<a href="mailto:Philani.Nyawose@durban.gov.za">Philani.Nyawose@durban.gov.za</a>	<b><u>AMASEVISI AYI-10</u></b>  1. Ukwemukela izikhalazo ngamasevisi kaMasipala 2. Ukuqashiswa kwezinsiza zikaMasipala 3. Amathikithi omgwaqo 4. Ezezindlu 5. I-Independent Electoral Commission 6. Ukulethwa kwamapulani amabhilidi 7. I-E-Careers 8. Amathuna 9. Uhlelo lwemisebenzi yomphakathi 10. OKhomishane abafungisayo
34.	<b><u>Hillcrest</u></b>  22 Delamore Road Hillcrest	<b>USupervisor:</b> Bongsi Miya  <b>Abasebenzi bakwa-Customer Services:</b> Nqaba Mhlana	031-3112716 031-3112717 031-3112718 031-3112752	<a href="mailto:Bongi.Miya@durban.gov.za">Bongi.Miya@durban.gov.za</a>	<b><u>AMASEVISI AYI-18</u></b>  1. Isicelo sokuxhunyelwa amasevisi kaMasipala 2. Ukwemukela izikhalazo ngamasevisi kaMasipala 3. Ukuqashiswa kwezinsiza zikaMasipala

NO .	IGAMA NEKHELI LESIKHUNGO	UMUNTU OKUXHUNYANWA NAYE	UCINGO	IKHELI LE-E-MAIL	IZIDINGO EZIHLINZEKWAYO
					<ol style="list-style-type: none"> <li>4. Amasevisi kakheshi</li> <li>5. Amathikithi omgwaqo</li> <li>6. Amalaysensi ebhizinii</li> <li>7. I-Independent Electoral Commission</li> <li>8. Imibuzo ngama-rates</li> <li>9. Imibuzo ngama-akhawnti amasevisi kaMasipala</li> <li>10. Value Assist</li> <li>11. Ukulethwa kwamapulani amabhilidi</li> <li>12. Ugesi wekhadi</li> <li>13. Imibuzo ngezokuhlelwa kwedolobha</li> <li>14. I-E-Careers</li> <li>15. Amathuna</li> <li>16. Ukwesekwa koMkhandlu</li> <li>17. OKhomishane abafungisayo</li> <li>18. Umtapo wolwazi</li> </ol>

**IMIKHAKHA YAMAREKHODI AHLALE ETHOLAKALA/ ABEKWA OBALA [Isigaba 14(1)(e)]**

[Lawa marekhodi atholakala ngaphandle kokuthi umuntu aze acele ukuwathola ngokoMthetho, kodwa lapho kunesidingo khonalokhu kungabuyezwa ngu-Information Officer ngokwesigaba 15(4) soMthetho.]

Izindleko: Umkhandlu ungabiza imali yezindleko zokukhiqizwa kwalolu lwazi olungezansi :-

1. Uhlelo lwezokuxhumana lwangonyaka
2. Umbiko wonyaka
3. Imigudu ehanjwa amabhasi nama-timetable
4. Imithetho kaMasipala
5. Umbiko Wokugcina woHlelo lokwesekwa kwezakhamizi
6. Uhlelo lokuma kwePhrojekthi Yesu lokwesekwa kwezakhamizi
7. Imigomo Yokusebenza Yesu lokwesekwa kwezakhamizi
8. Umbiko wonyaka woMnyango wakwaCommunity Participation and Action Support
9. Inqubomgomo yoMnyango wakwaCommunity Participation and Action Support
10. Amasu ezokuxhumana
11. Izitatimende zezimali ezihlanganisiwe zonyaka
12. Amaminithi oMkhandlu nama-ajenda
13. Imihlahlandlela ehlongozwayo Yezimali zesibonelelo (Grants in-aid)
14. Inqubomgomo ehlongozwayo yokulwisana nobuphufu
15. Inqubomgomo yezokuThuthukiswa kweNtsha yaseThekiwni
16. Isabelomali
17. Imihlahlandlela yeNqubomgomo kaMasipala mayelana noBulili
18. Inqubomgomo yemali yomshwalense
19. Inqubomgomo yemali yesibonelelo (Grants-in-aid)
20. Ukusungulwa kwamaphrojekthi e-ID
21. UHlelo lwemiHlahlandlela yeNtuthuko yeNkathi ende kanye noHlelo lweNtuthuko eDidiyele
22. Uhlu lwezinkampani ezihlinzeka ngamasevisi okuphekela imicimbi kaMasipala
23. Uhlu lwamadolobhana namadolobhakazi asebenzisana neTheku
24. Uhlu lwayo yonke imicimbi ebanjelwe kuleli Dolobha
25. Izivumelwano zokusebenzisana (MOU) ezisayindwe namanye amaDolobha esisebenzisana nawo
26. Amapulani okwakha omphakathi
27. Imiphumela yokuhlolwa kwamanzi
  
28. Eziphatheleme nomhlaba
  - Amaphemithi okuhweba ahleliwe
  
29. Amarekhodi nesibalo zendlela ekusetshenzwa ngayo:
  - Ulwazi lokuhweba oluhleliwe
  - Ulwazi mayelana namazinga omoya kanye nokuqashwa kwemvelo
  
30. Umbiko mayelana: Nokuhlolwa kohlelo lokutholakala kokudla kanye nokulwa nobubha kuMasipala weTheku
31. Izinqumo omkhandlu zokugunyazwa kwemicimbi emikhulu
32. Ibalazwe lemigwaqo nezinhlelo zokuthuthukiswa kwemigwaqo enkathini ezayo.
  
33. Izitatimende zomsebenzi- Yisu loKweseka iZakamizi lukaMasipala loHlelo lweTheku Lokulawulwa Kwezindawo (ABM)
  
34. Amathebula amatharifu
35. Imihlangano yamathenda okwenziwa kwemicimbi
  
36. Ukuhlelwa kweDolobha
  - Ukuhlelwa kwedolobha nokuklanywa kwalo (kubalwa nebalazwe) nemithethonqubo
  - Izinqubo zezicelo, imali nemihlahlandlela
  - Imininingwane yezicelo zemvume ezikhethekile
  - Izitifiketi zokuklanywa komhlaba
  - Inqubomgomo
  
37. Amapulani okwakha
  - Izinqubo zokufakwa kwezicelo, amafomu nemali ebizwayo
  - Imikhawulo yokulethwa kwezicelo
  - Amasheduli omsebenzi omncane wokwakha
  - amakhopi amapulani (omnikazi kuphela)
  - Inqubomgomo
  
38. Ukuklanywa komhlaba namatayitela ahangene
  - Amarekhodi amatayitela
  - Irejista yokuklanywa komhlaba
  
39. Izimpawu
  - Inqubomgomo - Izinqubo zokufakwa kwezicelo, amafomu nemali ebizwayo
  - Okucashunwe kwi-SAMOAC
  
40. Imvelo
  - Inqubomgomo
  
41. Amatharifu amanzi namanzi angcolile



**IZIHLOKO NEZINHLOBO ZAMAREKHODI AGCINWE NGUMASIPALA**

[Lama rekhodi ayatholakala ukuba abonwe uma lowo ofuna ukuwabona efake isicelo ngokoMthetho nokuthi uma lolu lwazi lungasusiwe kulolo olungadalulwa ngokomthetho.]

**1. Inqalasizinda**

- 1.1 Izinhlelo zokufakwa kukagesi
- 1.2 Izinhlelo zolwazi ngebalazwe
- 1.3 Ama-Landfill – enkathi ezayo kanye nakhona
- 1.4 Ulwazi oluphelele ngezihlelo zamapayipi amanzi nawamanzi angcolile
- 1.5 Imizila ye-Fibre Optic Cable
- 1.6 Imiphumela yokugcina kanye nolwazi mayelana nokusebenza kwama-Waste Water Treatment (UMnyango Wezamanzi nokuthuthwa kwendle)
- 1.7 Ukuhlaziya kwamanzi njengengxeye yezinhlelo zokuhlaziya zangaphakathi (UMnyango Wezamanzi nokuthuthwa kwendle)
- 1.8 Amanothi ezinhlelo zamakhompyutha (UMnyango Wezamanzi nokuthuthwa kwendle)
- 1.9 Izinombolo zabasebenzi zikamakhalekhukhwini: Izinombolo zabasebenzi zikaMakhalekhukhwini nabazinikwe uMkhandlu. (UMnyango Wezamanzi nokuthuthwa kwendle)
- 1.10 Izithombe zase-Treatment Works, kuphela uma ziphelezela abaphathi abafanele (UMnyango Wezamanzi nokuthuthwa kwendle)
- 1.11 Uwazi nge-Pump Station (UMnyango Wezamanzi nokuthuthwa kwendle)
- 1.12 Ulwazi ngomfutho wamanzi odingekayo (UMnyango Wezamanzi nokuthuthwa kwendle)
- 1.13 Ulwazi ngomfutho wamanzi odingekayo (UMnyango Wezamanzi nokuthuthwa kwendle)
- 1.14 Ulwazi ngezibalo (UMnyango Wezamanzi nokuthuthwa kwendle)
- 1.15 Amapulani okwakha: Abaphathi bakwazi ukukhipha izinqumo neziphakamiso ezenziwe uMnyango Wezamanzi mayelana nokugunyazwa nokungagunyazwa kwamapulani (UMnyango Wezamanzi Nokuthuthwa Kwendle)
- 1.16 Inqalasizinda: Ukuthi isimo sokuxhunywama kwamanzi simiphi (UMnyango Wezamanzi nokuthuthwa kwendle)
- 1.17 Amadepho okungangeni kuwo umphakathi: Indawo, amagama abasebenzi, izinamba abatholakala kuzo (UMnyango Wezamanzi nokuthuthwa kwendle)
- 1.18 Abameli abadinga ulwazi olungale kwemininingwane ye-akhawnti yomthengi, imibuzo yenqubo kuphela (UMnyango Wezamanzi nokuthuthwa kwendle)

**2. Imisebenzi yomphakathi**

- 2.1 Amakhaya abantu abadala
- 2.2 Umsebenzi wezonhlalakahle

**3. Ulwazi ngezimali**

- 3.1 Amatharifu
- 3.2 Amanani amathikithi nemali engenayo
- 3.3 Imali yesibonelelo
- 3.4 Imininingwane yamatharifu kagesi
- 3.5 Izilinganiso
- 3.6 Amarekhodi entengo yentela
- 3.7 Ama-invoice nemibhalo ehambisana nawo
- 3.8 Izitatimende zasebhange kanye namarekhodi otshalomali
- 3.9 Izikhwama zempesheni: Imibiko yonyaka nezitatimende zezimali
- 3.10 Imininingwane yemali engenayo kanye namaholo akhokhwa amabakhokhi bentela
- 3.11 Isitatimende sezikweletu kanye nomlando wezezimali
- 3.12 Ukuhlanganiswa kwemali yomkhandlu ebhange
- 3.13 Imininingwane mayelana nemali ekhokhelwe labo abakweletwayo
- 3.14 Imali yerenti eqoqiwe kanye nezikweletu zerenti ezisasilele
- 3.15 Imininingwane mayelana nemaliyezinhlawulo engenayo
- 3.16 Amatharifu okusetshenziswa kwezakhiwo zikaMasipala
- 3.17 Imininingwane mayelana namatharifu kanye nemali engenayo
- 3.18 Imali ebizwa emshwalenseni wokulahleka kwamanzi
- 3.19 Eziphathelele nocwaningo mabhuku

**4. Amarekhodi oMnyango wakwaNdaba zabasebenzi**

- 4.1 Amarekhodi e-UIF
- 4.2 Amasekhula nokukhangiswa kwezikhala zomsebenzi
- 4.3 Izinqubo nezinqubomgomo zakwaNdaba zabaSebenzi
- 4.4 Imininingwane mayelana namaholo nezibonelelo
- 4.5 Amarekhodi elivu
- 4.6 Imininingwane mayelana nezibonelelo zamaKhansela
- 4.7 Amarekhodi eziguli i.e abasebenzi
- 4.8 Ezempilo: Ukuqeqesha, ukwenyuka kwezikhundla nezemfundo

**5. Izibalo zokusebenza namarekhodi**

- 5.1 Ulwazi lwezibalo
- 5.2 Ukuhlola okujwayelekile
- 5.3 Izibalo zokuvalelwa/zokuxhunyelwa kabusha kukagesi
- 5.4 Izinhlelo zamasu nolwazi lwezibalo mayelana:
  - ✓ Nemigwaqo
  - ✓ Nonjinyela bezamanzi emvula nezindawo zasogwini
    - Amapulani emisele yamanzi
    - Ipulani yokusingatha imisele yokuvuna amanzi emvula
    - Uhla lwezikhazazo mayelana namanzi emvula
  - ✓ Ezokuthutha nezithuthi
    - Umsebenzi wabadwebi bamapulani bakaMasipala

- 5.5 Imiphumela yokubhalisa nokuhlola
- 5.6 Amapulani esikhashana namasu okumelana nezimo eziphuthumayo
- 5.7 Izibalo zanyanga zonke
- 5.8 Izinqubo zezimo zokusebenza eziphuthumayo
- 5.9 Imibono ngeso lomthetho namafayela amacala asenkantolo+
- 5.10 Eziphathelene nezempilo yezemvelo kanye nezinto ezibanga isicunulo
- 5.11 Imitholampilo: Ulwazi lwezibalo
- 5.12 Izindlu: isimo sokusilela nezinhlelo zangenkathi ezayo
- 5.13 Imininingwane mayelana nabakhishwa ezindlini
- 5.14 Ulwazi olugcinwe kwimitapo yolwazi
- 5.15 Imali eyenziwa yizimakethe
- 5.16 Amanani asezimakethe
- 5.17 Amazinga empahla yasezimakethe
- 5.18 Ulwazi mayelana nokudayisa ezimakethe
- 5.19 Imininingwane mayelana nenhlawulo ebizwayo i.e inhlawulo, amasamanisi, ezasenkantolo, njl.
- 5.20 Ukuhlolwa kwezimoto namarekhodi amalayisensi
- 5.21 Ukwepulwa komthetho nokushushiswa
- 5.22 Amarekhodi ezingozi
- 5.23 Amarekhodi ababoshiwe
- 5.24 Ukuhlaziywa komthelela wokuhamba kwezimoto nolwazi mayelana nezimpawu zomgwaqo kanye nolwazi oluqoshwe ngamakamera akwa-CCTV
- 5.25 Isisindo sempahla eqoqiwe
- 5.26 Amarekhodi amanzi asetshenziwe
- 5.27 Imininingwane mayelana namanzi asenqanyuliwe naxhunywe kabusha
- 5.28 Izivumelwano zokuphakwa kukagesi
- 5.29 Ulwazi mayelana nezohwebo
- 5.30 Amakhasimende azimele asema-Labulatory, Imiphumela yamakhasimende azimele izonikezwa lelo khasimende kuphela noma umkhulumeli walo elimuqokile.
- 5.31 Imiphumela yokuhlolwa kokugcola komoya
- 5.32 Imiphumela ye-IS, nokuhlolwa kokulawulwa kwamazinga

## 6. Amasevisi kaMasipala namarekhodi amakhasimende

- 6.1 Izicelo zamakhasimende, ukubhalisa neminingwane yokusebenzisa kwawo amasevisi
- 6.2 Imininingwane mayelana nobulungu basemtapweni wolwazi
- 6.3 Osonkontileka bamapayipi abazimele: Imali engenayo, Imininingwane yenkontileka nobufakazi bomsebenzi

## 7. Imininingwane nomhlaba

- 7.1 Amapulani okwakha
- 7.2 Izicelo nezimvume zakwa-Town Planning
- 7.3 Amarekhodi okuphoqelelwa komthetho aka-Town Planning
- 7.4 Ulwazi ngezindawo
- 7.5 Ulwazi mayelana nomhlaba woMkhandlu kanye nezinkomba zemizamo eyenziwe ukugwema ukudunwa nokuthathwa ngo dli komhlaba
- 7.6 **I-Valuation Roll**
- 7.7 Izivumelwano zokuqasha ezindaweni eziqashwe uMasipala
- 7.8 Izivumelwano zokuqasha ezindaweni eziqashiselwe uMasipala
- 7.9 Amatayitela omhlaba kaMasipala
- 7.10 Izicelo zokuqasho noma zokuthenga umhlaba
- 7.11 Ukutholakala komhlaba ozosetshenziswa umasipala kanye nokudliwa kwawo ngokusemthethweni
- 7.12 Ukwabelwa kwezihlangano zezokholo nezimele umhlaba
- 7.13 Ulwazi mayelana nokudayiswa komhlaba wokuqhuba amabhizinisi nokungewona owokuqhuba amabhizinisi
- 7.14 Umhlaba nempahla kamasipala

## 8. Izibalo jikelele, ukucwaningwa kohlabano nocwaningo mabhuku

- 8.1 Ukuhlaziywa komthelela wezemvelo
- 8.2 Imininingwane ngenhlalo yabantu
- 8.3 Ulwazi ngomphakathi
- 8.4 Ulwazi ngomnotho wesifunda
- 8.5 Amarekhodi ezingozi
- 8.6 Izibalo zezingozi nemibiko
- 8.7 Izibalo zezikhukhula, imvula nemihosha
- 8.8 Ukuhlaziywa kwezimo zengcuphe ne-Major Hazard Installation Risk
- 8.9 Izifo
- 8.10 Imininingwane yabanikazi bezindlu/iziqashi
- 8.11 Ukwawungomabhuku mayelana namabhilidi kaMasipala olwenziwa uMnyango wakwa-Occupational Health & Safety
- 8.12 Ukucwaningwa kwezinto ezingadala umlilo kumabhilidi kaMasipala
- 8.13 Imibiko mayelana nenhlanzeko ezindaweni ezisemhlabeni kaMasipala
- 8.14 Amarekhodi ophenyo olwenziwe kanye nemiphumela
- 8.15 Ikhwalithi yamanzi asolwandle, ama-pool, nezimpophoma njl.
- 8.16 Imibiko yocwaningo mabhuku, i.e .i- forensic, amakhompyutha nokucwaninga ingcuphe

## 9. Amapulani kaMasipala nezinqubo zezinqubo-mgomo

- 9.1 Umthetho osebenza kuHulumeni wasekhaya kanye nemithetho kaMasipala
- 9.2 Eziphathelene nenqubo-mgomo yezempilo

## 10. Amarekhodi okuthengiselana ngempahla

- 10.1 Imininingwane yamakhotheshini atholakele
- 10.2 Amakhophi amathenda akhangisiwe nasekhishiwe
- 10.3 Uhla lwezinkampani ezisebenzisana noMasipala ngenhloso yokufaka amathenda
- 10.4 Imininingwane yamathenda/izinkontileka ezikhishiwe
- 10.5 Izinga lokwenziwa komsebenzi kumathenda ezokuphepha

UMasipala weTheku

ISICELO SOKUTHOLA IREKHODI LESIKHUNGO SOMPHAKATHI  
(Isigaba 18(1) soMthetho Wokugququzela Ukutholakala Kolwazi, 2000 (UMthetho No. 2 ka 2000)  
[UMthethonqubo 6]

**A.IMINININGWANE YESIKHUNGO SOMPHAKATHI**

**I-Information Officer**

Igama nesikhundla	Iposi	Ikheli	Inombolo yocingo	I-email
<b>S Nzuza</b> IMenenja yedolobha	PO Box 1014 Durban 4000	City Hall, Dr Pixley KaSeme Street, eThekwini	031-3112130/2	<a href="mailto:Sipho.Nzuza@durban.gov.za">Sipho.Nzuza@durban.gov.za</a>

**Deputy Information Officer**

Igama nesikhundla	Iposi	Ikheli	Inombolo yocingo	I-email
<b>A Seheri</b> INhloko: City Administration	PO Box 1014 Durban 4000	City Hall, Dr Pixley KaSeme Street, eThekwini	031-3112390/1	<a href="mailto:adele.seheri@durban.gov.za">adele.seheri@durban.gov.za</a>

**IFOMU A**

**ISICELO SOKUTHOLA IREKHODI LESIKHUNGO SOMPHAKATHI**

(Isigaba 18(1) soMthetho Wokugququzela Ukutholakala Kolwazi, 2000 (UMthetho No. 2 ka 2000)

[UMthethonqubo 6]

**INGXENYE ESETSHENZISWA WUMNYANGO**

Inombolo yeNkomba: \_\_\_\_\_  
Isicelo semukelwe ngu: \_\_\_\_\_  
(Isikhundla, igama nesibongo sika-**Information Officer/Deputy Information Officer**)  
ngomhla ka \_\_\_\_\_ usuku \_\_\_\_\_.

Imali yesicelo (uma ikhona): R.....  
Idiphozi (uma ikhona): R.....  
Imali ebizwayo: R.....

**KUSAYINA U-INFORMATION OFFICER/DEPUTY INFORMATION OFFICER.**

**A. Imininingwane Yesikhungo soMphakathi**

I-Information Officer/Deputy Information Officer

\_\_\_\_\_  
\_\_\_\_\_  
\_\_\_\_\_

**B. Imininingwane yomuntu ofisa ukuthola i-rekhodi**

Full name and surname:

- (a) Imininingwane yalowo ofisa ukuthola irekhodi kufanele ibhalwe lapha ngezansi.  
(b) Ikheli kanye/noma ifeksi yakwiRiphabhlikhi lapho kufanele kuthunyelwe khona ulwazi, kufanele kuhlinzekwe,  
(c) Ubufakazi bokuthi lesi sicelo sifakwa ngokwasiphi isikhundla, uma kukhona, kufanele kufakwe.

Identity Number: \_\_\_\_\_  
Postal address: \_\_\_\_\_  
IFeksi: \_\_\_\_\_  
Ucingo: \_\_\_\_\_  
I-email: \_\_\_\_\_

**Isikhundla isicelo esifakwe ngaphansi kwaso, uma sifakwa egameni lomunye umuntu: -**

**C. Iminingwane yalowo okufakwa isicelo egameni lakhe**

Full Names and Surname: \_\_\_\_\_  
*Le ngxenye kufanele igcwaliswe **KUPHELA** uma isicelo sifakwa egameni lomunye umuntu*  
Identity Number: \_\_\_\_\_

**D. Imininingwane yerekhodi**

- (a) Hlinzeka iminingwane ephelile yerekhodi ofisa ukuthola, kanye nenombolo eyinkomba uma unalo ulwazi lwayo, ukuze irekhodi litholakale.  
(b) Uma isikhala esihlinzekiwe singenele, uyacelwa ukuthi ugcwalise kwelinye iphepha bese ulinamathisela kuleli khasi. Umfaki sicelo kufanele asayine yonke imibhalo enanyathiselwe

1. Incazelo yerekhodi noma yengxenye ebalulekile yerekhodi:  
\_\_\_\_\_  
2. Inkomba, uma ikhona: \_\_\_\_\_  
3. Eminye Imininingwane yerekhodi:  
\_\_\_\_\_

**E. Imali ekhokhwayo**

- (a) Isicelo sokuthola irekhodi, ngale kwerekhodi eliqukethe ulwazi ngawe, siyonakwa kuphela emuva kokuthi ukhokhe imali ekhokhelwa isicelo.  
(b) Uzokwaziswa ngemali edingekayo yokukhokhela isicelo.  
(c) Imali ekhokhwayo yokuthola irekhodi yencike kwifomu okudingeka ukuba ligcwaliswe kanye nasesikhathini esanele sokuthi kutholakale irekhodi.  
(d) Uma ufanelekile ukuba ukhululwe ukukhokha imali ekhokhwayo, chaza izizathu zokukhululwa kwakho.

Uma unenkinga ukukhubazeka evimba ukuba ufunde, ubuke noma ulalele leli rekhodi ngendlela elihlinzekwe ngayo ku 1 kuya ku 4 ngezansi, yisho indlela okhubazeka ngayo bese uchazaukuthi yiluphi uhlobo lwerekhodi oludingayo					
Ukukhubazeka:			Uhlobo oludingekayo:		
Khetha ibhokisi elifanele ngokubhala u- X					
QAPHELA:					
(a) Ukuphumelela kwesicelo sakho sokuthola ulwazi kwifomu elithile kungancika kwindlela irekhodi elitholakala liyiyona.					
(b) Ukuthola eliyindlela eceliwe kunganqatshelwa ngaphansi kwezimo ezithile. Uma kwenzeke ngale ndlela uyokwaziswa ukuthi isicelo sakho singemukeleka yini ngelinye ifomu.					
(c) Imali ekhokhelwa ukuthola irekhodi, uma ikhona, izokalwa ngefomu elihambisana naleso sicelo.					
<b>1. Uma irekhodi likwifomu eliphrintiwe:</b>					
		Ikhophi yerekhodi*		Ukuhlolwa kwerekhodi	
<b>2. Uma irekhodi linezithombe; (Lapha kubalwa izithombe, ama-slides, i-video, izithombe ezikhiqizwa ngekhompyutha, imidwebo njl.)</b>					
Ukubuka izithombe		Ikhophi yezithobe		Ukukhishelwa izithombe	
<b>3. Uma irekhodi lingamazwi aqoshiwe angakhiqizwa ngokusebenzisa umsindo:</b>					
Ukulalela umsindo (ikhasethi)		Ukubhala phansi okuqoshwe ngomsindo* (umbalo obhaliwe noma ophrintiwe)			
<b>4. Uma irekhodi likwi-khompyutha noma lisemshinini okwazi ukulenza lifundeke:</b>					
Ikhophi yerekhodi ephrintiwe		Ikhophi ephrintiwe yolwazi olutholakale kwirekhodi*		Ikhophi ekwikhompyutha efundekayo* (i-stiffy noma i-compact disc)	
*Uma ucele ikhophi ebhaliwe (engenhla), ngabe ufisa ukuthi uposelwe lekhophi ekhishelwe phansi na? <b>Iposi liyakhokhelwa</b>				YEBO	CHA
Qaphela ukuthi uma irekhodi lingatholakali ngolimi oluncamelayo, uyolithola ngolimi irekhodi eliqoshwe ngalo					
Ngabe ufisa ukuthi irekhodi libe ngaluphi ulimi _____					
Uzobhalelwa incwadi ekwazisayo ukuthi ngabe isicelo sakho siphumelele noma cha. Uma ufisa ukwaziswa ngenye indlela, uyacelwa ukuthi udalule ukuthi iyiphi leyo ndlela bese uhlinzeka imininingwane ephelele ehambisana nesicelo sakho.					

Isizathu sokukhululwa ekutheni ukhokhe imali:

**F. Ifomu lokuthola ulwazi (bheka Ikhasi elilandelayo)**

**G. Isaziso ngesinqumo sesicelo sokuthola ulwazi**

Ufisa ukuthi waziswe kanjani ngomphumela wesicelo sakho serekhodi?

Isayinwe e: \_\_\_\_\_ ngomhla ka \_\_\_\_\_ inyanga \_\_\_\_\_ 20\_\_\_\_\_

**KUSAYINA OFAKE ISICELO/NOMA OFAKA ISICELO  
EGAMENI LAKHE**

**IMALI EKHOKHWAYO**

(NgokoMthethonqubo 187 wangomhla ka 15 Febhuwari 2002)

IMALI YESICELO, NGALE KOMUNTU OCELA IREKHODI LAKHE	<b>R35</b>
UKUGAYA KABUSHA/IMALI EBIZWAYO Ibhuku: I-photocopy yekhasi elingu A4 ngalinye noma ingxenye yalo. Nanoma iyiphi i-photocoy engu- A4	<b>60c</b>
Ikhophi yekhasi elingu-A4 noma ingxenye yalo elikwikhompuyutha noma elisemshinini elifundeka kuwo	<b>40C</b>
Ikhophi ekwikhompuyutha noma ekwi-stiffy disc noma i-compact disc	<b>R5 R40</b>
Ukukhishelwa kwezithombe, ekhasini elingu-A4 noma ingxenye yalo	<b>R22</b>
Ikhophi yezithombe	<b>R60</b>
Ukukhishelwa kwerekhodi locwaningo mabhuku ekhasini elingu-A4 noma ingxenye yalo	<b>R12</b>
Ikhophi yerekhodi elilalelwayo	<b>R17</b>

Ukufuna noma ukulungiselela ukukhishwa kwerekhodi, u-R15 ihora ngalinye noma ingxenye yalo, ngaphandle kwehora lokuqala elisetshenziselwa ukufuna nokulungiselela.

Ngenhloso yeSigaba 22(2) soMthetho, nakhu okuzosebenza: -

- (a) Amahora ayisithupha njengazokweqiwa ngaphambi kokukhokhwa kwediphozi.
- (b) Ingxenye eyodwa kokuthathu yemali ebizwayo ekhokhwa njengediphozi umfaki sicelo.

Iposi liyakhokhelwa ofake isicelo uma efuna ukuthi ikhophi yerekhodi ithunyelwe ngeposi.

## IFOMU B

## UMasipala weTheku

ISAZISO SOKUDLULISA ISIKHALO SANGAPHAKATHI

(Isigaba 75 soMthetho Wokugquzuzela Ukutholakala Kolwazi, 2000 (UMthetho No. 2 ka 2000)  
[UMthethonqubo 8])

ISHO INOMBOLO YAKHO YENKOMBA .....

## A. IMININGWANE YESIKHUNGO SOMPHAKATHI

**I-Information Officer**

Igama nesikhundla	Iposi	Ikheli	Inombolo yocingo	I-email
<b>Mnu. S Nzuza</b> Imenenja yeDolobha	PO Box 1014 Durban 4000	City Hall, Dr Pixley KaSeme Street Entrance, Durban	031-3112130/2	Sipho.Nzuza@durban.gov.za

**I-Deputy Information Officer**

Igama nesikhundla	Iposi	Ikheli	Inombolo yocingo	I-email
<b>Nks. A Seheri</b> Inhloko: City Administration	PO Box 1014 Durban 4000	City Hall, Dr Pixley KaSeme Street Entrance, Durban Room 5	031-3112390/1	adele.seheri@durban.gov.za

## B. IMININGWANE YOFAKA ISICELO/UMUNTU WESITHATHU ODLULISA ISIKHALO NGAPHAKATHI

- |   |
|---|
| <p>a) Imininingwane yomuntu odlulisa isikhalo sangaphakathi kufanele ihlinzekwe lapha ngezansi</p> <p>b) Ubufakazi besizathu sokudluliswa kwesikhalo, uma bukhona, kufanele buphanyekwe.</p> <p>c) Uma odlulisa isikhalo kungumuntu wesithathu obecele ulwazi, Imininingwane yofake isielo kufanele idalulwe ku "C" ngezansi.</p> |
|---|

Amagama aphelele nesibongo: .....

Inombolo kamazisi: .....

Ikheli: .....

.....

.....

Inombolo yocingo: .....

Ifeksi: .....

I-email: .....

Isikhundla somuntu ofaka isikhalo sangaphakathi egameni lomunye umuntu:

.....

.....

.....

## C. IMININGWANE YOFAKA ISICELO

Le ngxenye igcwaliswa <b>KUPHELA</b> uma kungumuntu wesithathu ofaka isikhalo sangaphakathi ngale komfakisicelo
---

Amagama aphelele nesibongo: .....

Inombolo kamazisi: .....

## D. ISIZATHU ESENZA KUFAKWE ISIKHALO SANGAPHAKATHI

Khetha isizathu sokufaka isikhalo sangaphakathi ngokufaka lolu phawu "X" ebhokisini elifanele.

	Ukuncatshelwa ukuthola irekhodi
	Isinqumo mayelana nemali ebizwayo ngefomu ngokwesiga 22 somthetho.
	Isinqumo mayelana nokwelulwa kwesikhathi okufanele isicelo serekhodi sibe sesiphothuliwe ngokwesigaba 26(1) soMthetho.
	Isinqumo ngokwesigaba 29(3) soMthetho sokunqaba ukutholakala kwerekhodi kwifomu njengokwesicelo sikamfakisicelo
	Isinqumo sokuvumela isicelo sokuthola irekhodi.

**E. IZIZATHU ZOKUFAKA ISIKHALO**

Uma isikhala esihlinzekiwe singaneli, uyacelwa ukuthi uqhubeke ekhasini eliseceleni bese ulinamathisela kuleli fomu. Kufanele usayine yonke imibhalo enanyathiselwe.

1. Chaza izizathu ezenza ukuthi ufake isikhalo sangaphakathi

.....  
.....  
.....  
.....

2. Isho lonke olunye ulwazi ocabanga ukuthi lubalulekile ekucubungulweni kwalesi sikhalo

.....  
.....

**F. ISAZISO NGESINQUMO SESIKHALO**

Uzobhalelwa incwadi ekwazisa ngesinqumo sesikhalo sakho sangaphakathi. Uma ufisa ukwaziswa ngezinye izindlela, uyacelwa ukuthi uchaze leyo ndlela bese uhlinzeka ngemininingwane eqondile yikhona sizokwazi ukuhambisana naleso sicelo sakho.

1. Chaza indlela .....
2. Imininingwane yayo .....

Isayindwe e..... ngomhla ka ..... inyanga ..... 20.....

**KUSAYINA KOMFAKI SICELO**

**INGXENYE ESETSHENZISWA UMNYANGO**

**IREKHODI LOKUFAKWA KWESIKHALO SANGAPHAKATHI**

Isikhalo semukelwe ngomhla ka: ..... (usuku)

Igama losamukelile.....

.....

(Isikhundla, igama nesibongo sika-Information Officer/Deputy Information Officer)

Isikhalo sihambisana nezizathu zesinqumo sika-Information Officer's/Deputy Information Officer, futhi, uma kunesidingo, neminingwane yomuntu omele umfaki sicelo esilelthwe u-Information Officer/Deputy Information Officer

Ngomhla ka .....(usuku) kwinkundla egunyazayo.

**UMPHUMELA WESIKHALO**