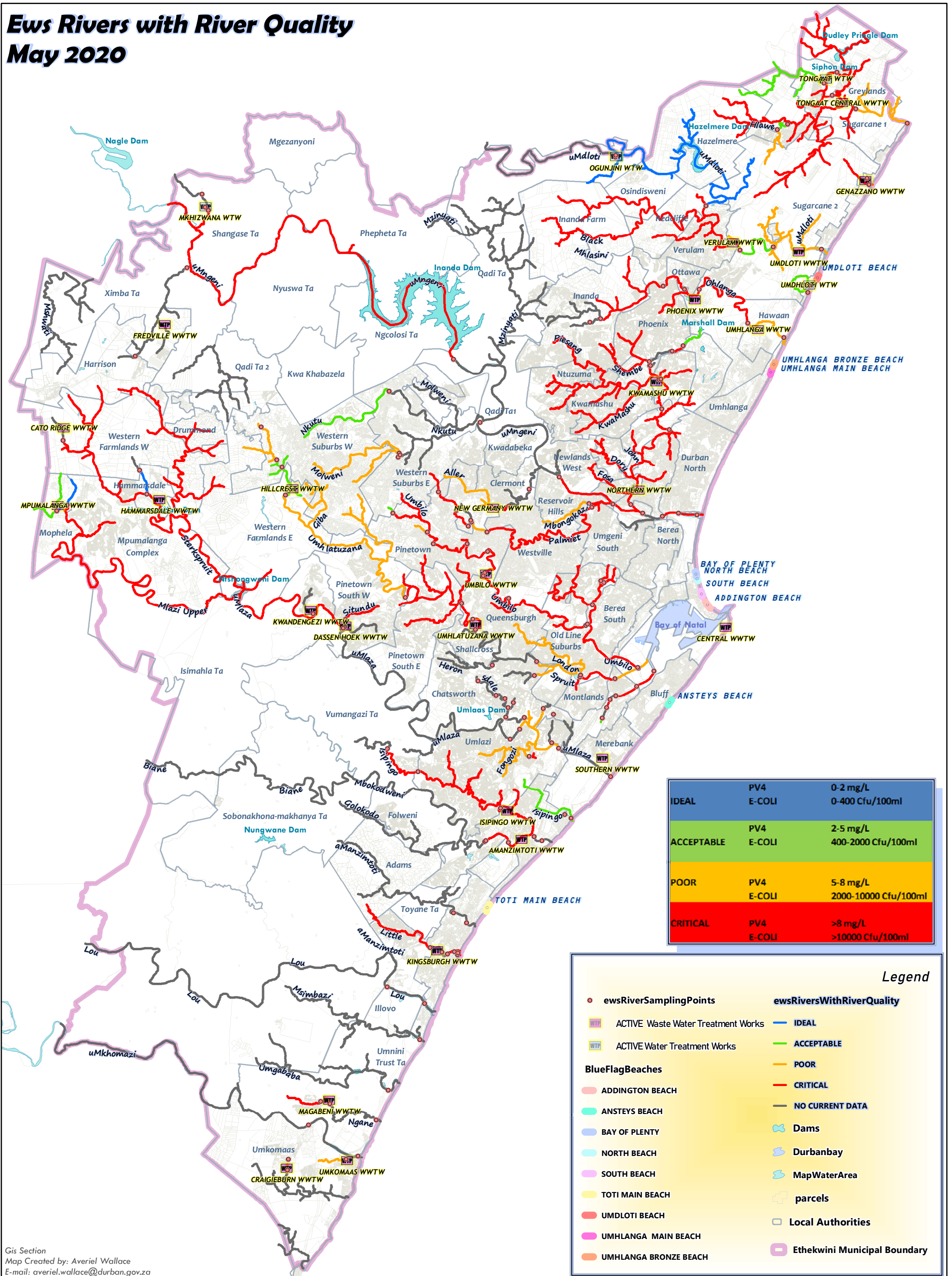


# Ews Rivers with River Quality

## May 2020



IDEAL	PV4 E-COLI	0-2 mg/L 0-400 Cfu/100ml
ACCEPTABLE	PV4 E-COLI	2-5 mg/L 400-2000 Cfu/100ml
POOR	PV4 E-COLI	5-8 mg/L 2000-10000 Cfu/100ml
CRITICAL	PV4 E-COLI	>8 mg/L >10000 Cfu/100ml

**Legend**

- eweRiverSamplingPoints
- WWTW ACTIVE Waste Water Treatment Works
- WWTW ACTIVE Water Treatment Works
- BlueFlagBeaches**
  - ADDINGTON BEACH
  - ANSTEYS BEACH
  - BAY OF PLENTY
  - NORTH BEACH
  - SOUTH BEACH
  - TOTI MAIN BEACH
  - UMDLOTI BEACH
  - UMHLANGA MAIN BEACH
  - UMHLANGA BRONZE BEACH
- eweRiversWithRiverQuality
  - IDEAL
  - ACCEPTABLE
  - POOR
  - CRITICAL
  - NO CURRENT DATA
- Dams
- Durbanbay
- MapWaterArea
- parcels
- Local Authorities
- Ethekewini Municipal Boundary

Gis Section  
 Map Created by: Averiell Wallace  
 E-mail: averiell.wallace@durban.gov.za

**Ethekewini Water and Sanitation Engineering and Data Services**  
 GIS Section  
 Senior Manager: Steve Pietersen  
 Office No: 031 3118 655  
 E-mail: Steve.Pieterse@durban.gov.za



**Index Water Quality Information - IWQI205**  
 Scale - 1:230 000  
 Date: 2020/10/07

For Further Information:  
 Scientific Services  
 Pollution and Environment  
 Office No: 031 311 8534  
 Project Technician: Londiwe Satimburwa  
 email: Londiwe.Satimburwa@durban.gov.za  
 Technician: Ayanda Duma  
 email: Ayanda.duma@durban.gov.za

**Reflects Effectiveness of Sanitation Services**

NOTE: DISCLAIMER NOTICE  
 The eThekewini Water and Sanitation Services accepts no liability or responsibility whatsoever for the correctness of and / or the accuracy of this information.  
 The Water Services should be used as a guideline Only. Details should be physically checked on site.