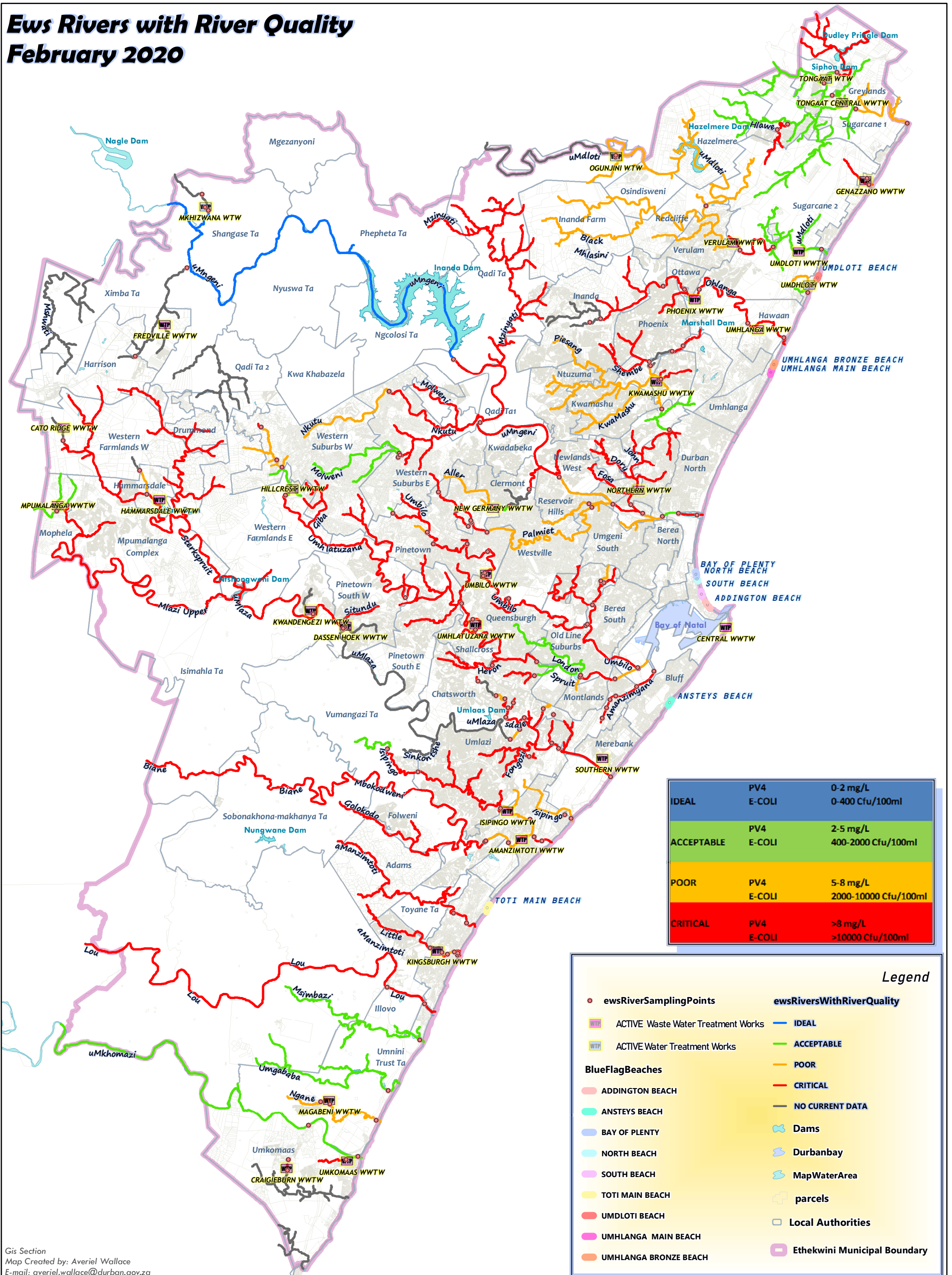


# Ews Rivers with River Quality

## February 2020



Gis Section  
 Map Created by: Averiell Wallace  
 E-mail: averiell.wallace@durban.gov.za

**Ethekewini Water and Sanitation**  
**Engineering and Data Services**  
 GIS Section  
 Senior Manager: Steve Pietersen  
 Office No: 031 3118 655  
 E-mail: Steve.Pieterse@durban.gov.za



### Index Water Quality Information - IWQI202

Scale - 1:230 000  
 Date: 2020/10/07

For Further Information:  
 Scientific Services  
 Pollution and Environment  
 Office No: 031 311 8534  
 Project Technician: Londiwe Satimburwa  
 email: Londiwe.Satimburwa@durban.gov.za  
 Technician: Ayanda Duma  
 email: Ayanda.duma@durban.gov.za

### Reflects Effectiveness of Sanitation Services



NOTE: DISCLAIMER NOTICE  
 The eThekewini Water and Sanitation Services accepts no liability or responsibility whatsoever for the correctness of and / or the accuracy of this information.  
 The Water Services should be used as a guideline Only. Details should be physically checked on site.