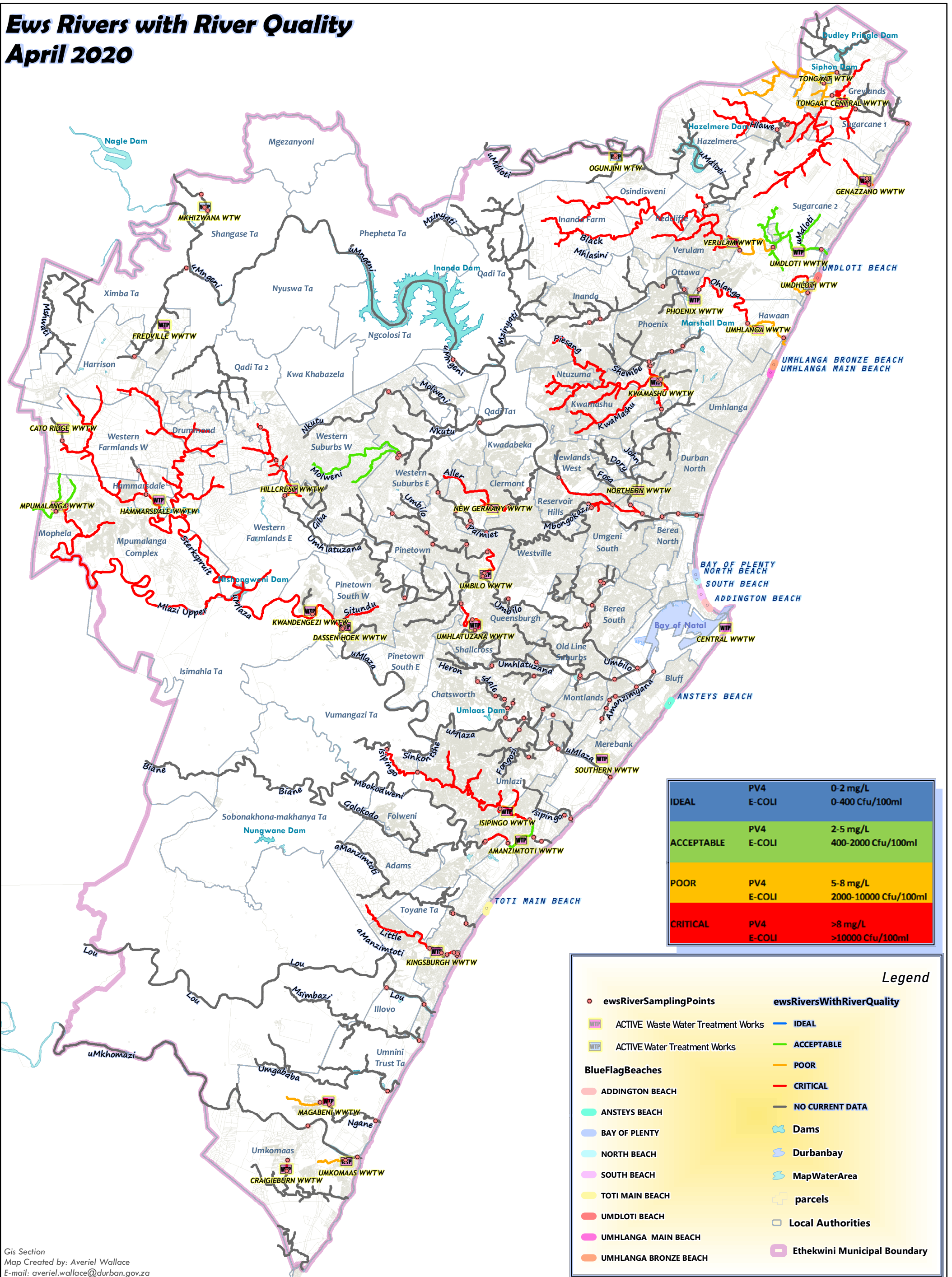


Ews Rivers with River Quality

April 2020



IDEAL	PV4 E-COLI	0-2 mg/L 0-400 Cfu/100ml
ACCEPTABLE	PV4 E-COLI	2-5 mg/L 400-2000 Cfu/100ml
POOR	PV4 E-COLI	5-8 mg/L 2000-10000 Cfu/100ml
CRITICAL	PV4 E-COLI	>8 mg/L >10000 Cfu/100ml

Legend

- eweRiverSamplingPoints
- WWTW ACTIVE Waste Water Treatment Works
- WWTW ACTIVE Water Treatment Works
- BlueFlagBeaches**
 - ADDINGTON BEACH
 - ANSTEYS BEACH
 - BAY OF PLENTY
 - NORTH BEACH
 - SOUTH BEACH
 - TOTI MAIN BEACH
 - UMDLOTI BEACH
 - UMHLANGA MAIN BEACH
 - UMHLANGA BRONZE BEACH
- eweRiversWithRiverQuality
 - IDEAL
 - ACCEPTABLE
 - POOR
 - CRITICAL
 - NO CURRENT DATA
- Dams
- Durbanbay
- MapWaterArea
- parcels
- Local Authorities
- Ethekewini Municipal Boundary

Gis Section
Map Created by: Averiell Wallace
E-mail: averiell.wallace@durban.gov.za

**Ethekewini Water and Sanitation
Engineering and Data Services**
GIS Section
Senior Manager: Steve Pietersen
Office No: 031 3118 655
E-mail: Steve.Pieterse@durban.gov.za



Index Water Quality Information - IWQI204

Scale - 1:230 000
Date: 2020/10/07

For Further Information:
Scientific Services
Pollution and Environment
Office No: 031 311 8534
Project Technician: Londiwe Satimburwa
email: Londiwe.Satimburwa@durban.gov.za
Technician: Ayanda Duma
email: Ayanda.duma@durban.gov.za

Reflects Effectiveness of Sanitation Services



NOTE: DISCLAIMER NOTICE
The eThekewini Water and Sanitation Services accepts no liability or responsibility whatsoever for the correctness of and / or the accuracy of this information.
The Water Services should be used as a guideline Only. Details should be physically checked on site.