

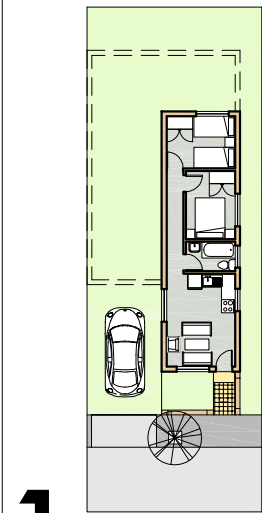
Narrow Frontage (NF)

DETACHED

SEMI - DETACHED

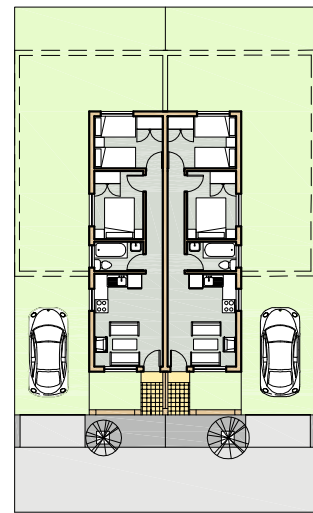
ROW

SINGLE



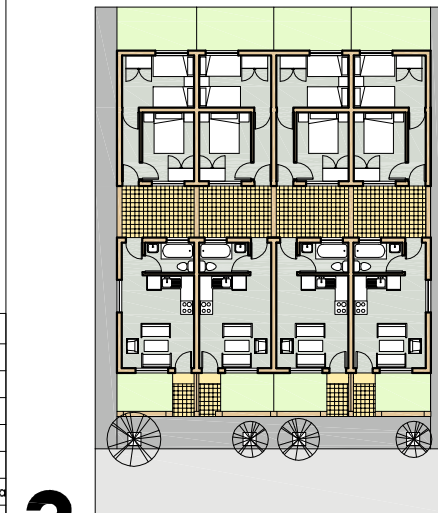
1 NF/SI/DE

| TYPOLOGY 1 | |
|----------------|---------------------|
| Unit size | 44m ² |
| Stand size | 152.5m ² |
| No of bedrooms | 2 |
| FAR @ delivery | 0.29 |
| FAR @ optimum | 0.6 |
| Density | 39 units/ha |
| Unit cost | |
| infra. Cost | |
| Scale | 1:350 |



2 NF/SI/SD

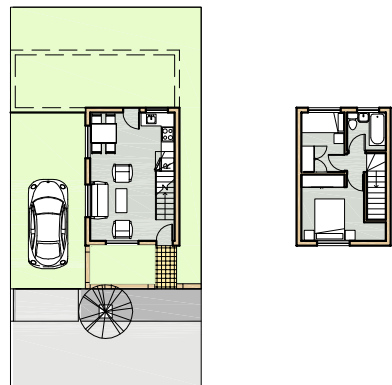
| TYPOLOGY 2 | |
|----------------|---------------------|
| Unit size | 42m ² |
| Stand size | 131.5m ² |
| No of bedrooms | 2 |
| FAR @ delivery | 0.32 |
| FAR @ optimum | 0.67 |
| Density | 45.5 units/ha |
| Unit cost | |
| infra. Cost | |
| Scale | 1:350 |



3 NF/SI/RO

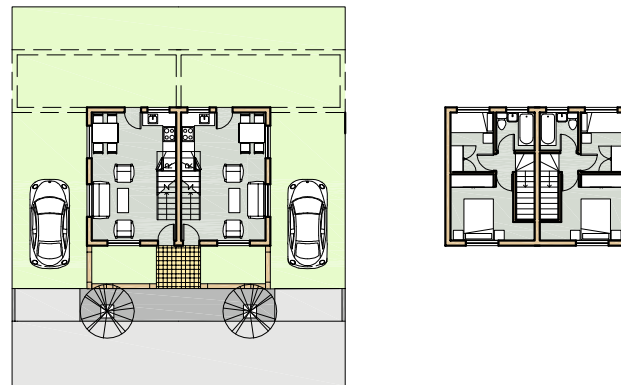
| TYPOLOGY 3 | |
|----------------|--------------------|
| Unit size | 46m ² |
| Stand size | 69.7m ² |
| No of bedrooms | 2 |
| FAR @ delivery | 0.66 |
| FAR @ optimum | 0.66 |
| Density | 86 units/ha |
| Unit cost | |
| infra. Cost | |
| Scale | 1:350 |

DUPLEX



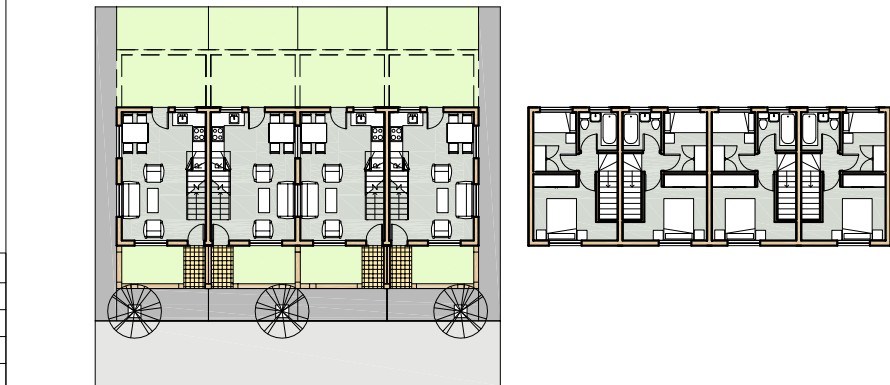
4 NF/DU/DE

| TYPOLOGY 4 | |
|----------------|---------------------|
| Unit size | 56m ² |
| Stand size | 113.4m ² |
| No of bedrooms | 2 |
| FAR @ delivery | 0.49 |
| FAR @ optimum | 0.67 |
| Density | 53 units/ha |
| Unit cost | |
| infra. Cost | |
| Scale | 1:350 |



5 NF/DU/SD

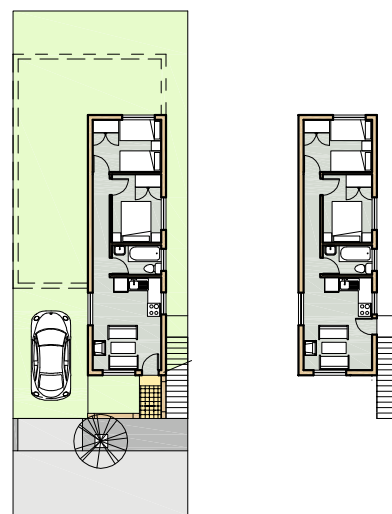
| TYPOLOGY 5 | |
|----------------|--------------------|
| Unit size | 54m ² |
| Stand size | 98.9m ² |
| No of bedrooms | 2 |
| FAR @ delivery | 0.54 |
| FAR @ optimum | 0.75 |
| Density | 60.5 units/ha |
| Unit cost | |
| infra. Cost | |
| Scale | 1:350 |



6 NF/DU/RO

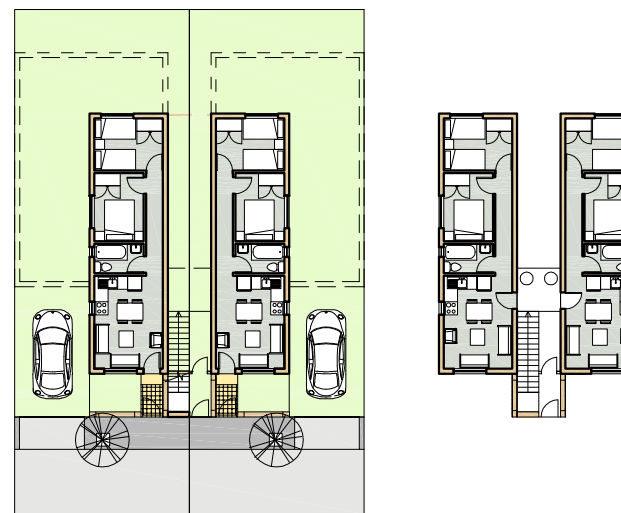
| TYPOLOGY 6 | |
|----------------|--------------------|
| Unit size | 54m ² |
| Stand size | 55.3m ² |
| No of bedrooms | 2 |
| FAR @ delivery | 0.97 |
| FAR @ optimum | 1.19 |
| Density | 111.5 units/ha |
| Unit cost | |
| infra. Cost | |
| Scale | 1:350 |

DOUBLE



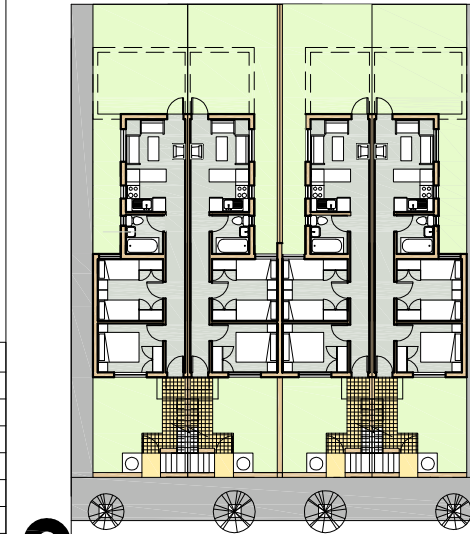
7 NF/DO/DE

| TYPOLOGY 7 | |
|----------------|------------------------|
| Unit size | 44m ² /unit |
| Stand size | 153m ² |
| No of bedrooms | 2 |
| FAR @ delivery | 0.58 |
| FAR @ optimum | 1.19 |
| Density | 78 units/ha |
| Unit cost | |
| infra. Cost | |
| Scale | 1:350 |



8 NF/DO/SD

| TYPOLOGY 8 | |
|----------------|------------------------|
| Unit size | 44m ² /unit |
| Stand size | 153m ² |
| No of bedrooms | 2 |
| FAR @ delivery | 0.58 |
| FAR @ optimum | 1.19 |
| Density | 78 units/ha |
| Unit cost | |
| infra. Cost | |
| Scale | 1:350 |



9 NF/DO/RO

| TYPOLOGY 9 | |
|----------------|------------------|
| Unit size | 45m ² |
| Stand size | 95m ² |
| No of bedrooms | 2 |
| FAR @ delivery | 0.95 |
| FAR @ optimum | 1.3 |
| Density | 126 units/ha |
| Unit cost | |
| infra. Cost | |
| Scale | 1:350 |

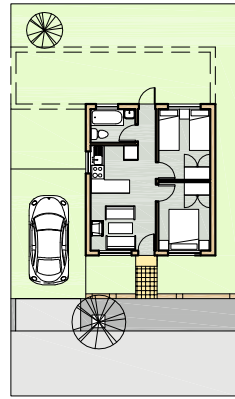
Medium Frontage (MF)

DETACHED

SEMI -DETACHED

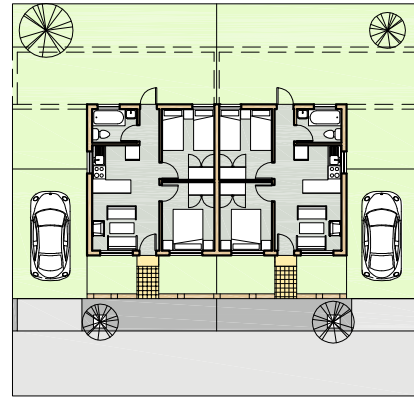
ROW

SINGLE



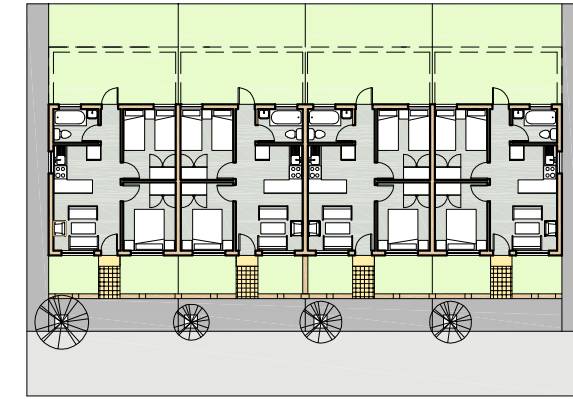
| TYPOLOGY 14 | |
|----------------|---------------------|
| Unit size | 42m ² |
| Stand size | 142.7m ² |
| No of bedrooms | 2 |
| FAR @ delivery | 0.29 |
| FAR @ optimum | 0.48 |
| Density | 42 units/ha |
| Unit cost | |
| infra. Cost | |
| Scale | 1:350 |

14 MF/SI/DE



| TYPOLOGY 15 | |
|----------------|-------------------|
| Unit size | 42m ² |
| Stand size | 129m ² |
| No of bedrooms | 2 |
| FAR @ delivery | 0.33 |
| FAR @ optimum | 0.52 |
| Density | 46.5 units/ha |
| Unit cost | |
| infra. Cost | |
| Scale | 1:350 |

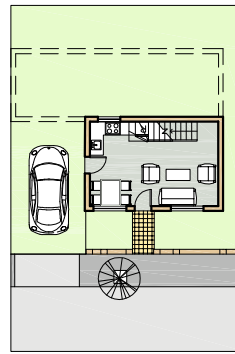
15 MF/SI/SD



| TYPOLOGY 16 | |
|----------------|--------------------|
| Unit size | 42m ² |
| Stand size | 81.8m ² |
| No of bedrooms | 2 |
| FAR @ delivery | 0.51 |
| FAR @ optimum | 0.71 |
| Density | 73.5 units/ha |
| Unit cost | |
| infra. Cost | |
| Scale | 1:350 |

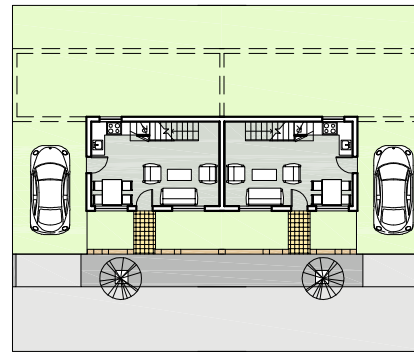
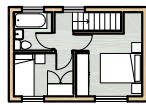
16 MF/SI/RO

DUPLEX



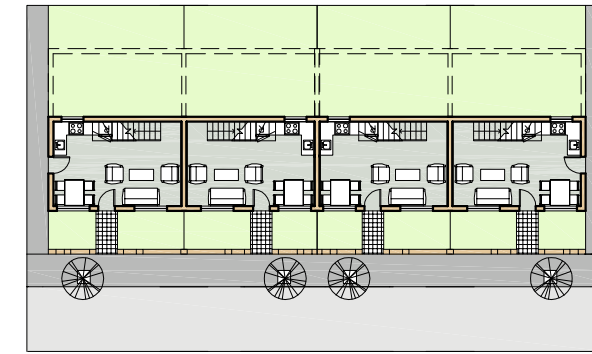
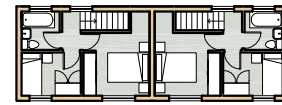
| TYPOLOGY 17 | |
|----------------|---------------------|
| Unit size | 56m ² |
| Stand size | 113.4m ² |
| No of bedrooms | 2 |
| FAR @ delivery | 0.49 |
| FAR @ optimum | 0.77 |
| Density | 53 units/ha |
| Unit cost | |
| infra. Cost | |
| Scale | 1:350 |

17 MF/DU/DE



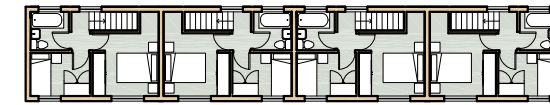
| TYPOLOGY 18 | |
|----------------|---------------------|
| Unit size | 55m ² |
| Stand size | 111.6m ² |
| No of bedrooms | 2 |
| FAR @ delivery | 0.49 |
| FAR @ optimum | 0.86 |
| Density | 60.5 units/ha |
| Unit cost | |
| infra. Cost | |
| Scale | 1:350 |

18 MF/DU/SD

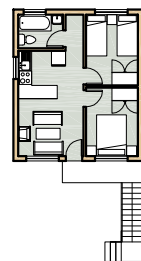
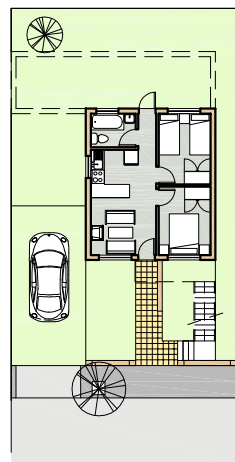


| TYPOLOGY 19 | |
|----------------|--------------------|
| Unit size | 55m ² |
| Stand size | 72.2m ² |
| No of bedrooms | 2 |
| FAR @ delivery | 0.76 |
| FAR @ optimum | 1.03 |
| Density | 83.1 units/ha |
| Unit cost | |
| infra. Cost | |
| Scale | 1:350 |

19 MF/DU/RO

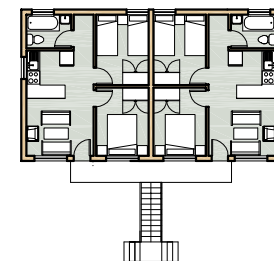
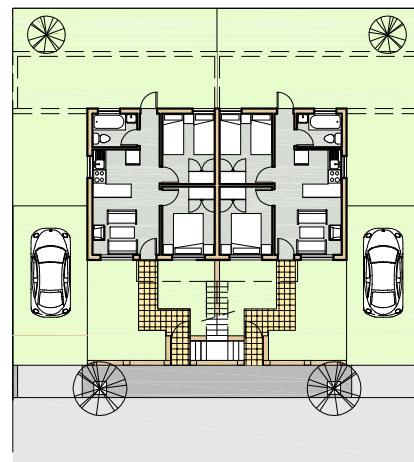


DOUBLE



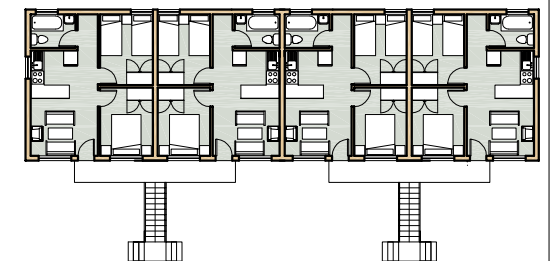
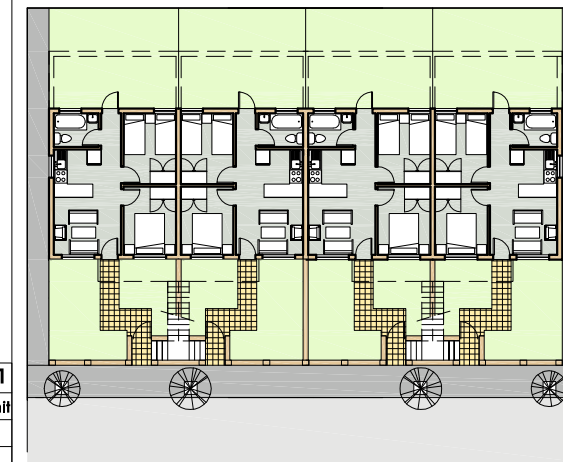
| TYPOLOGY 20 | |
|----------------|------------------------|
| Unit size | 42m ² /unit |
| Stand size | 172.8m ² |
| No of bedrooms | 2 |
| FAR @ delivery | 0.49 |
| FAR @ optimum | 0.86 |
| Density | 76 units/ha |
| Unit cost | |
| infra. Cost | |
| Scale | 1:350 |

20 MF/DO/DE



| TYPOLOGY 21 | |
|----------------|------------------------|
| Unit size | 42m ² /unit |
| Stand size | 143m ² |
| No of bedrooms | 2 |
| FAR @ delivery | 0.58 |
| FAR @ optimum | 0.95 |
| Density | 84 units/ha |
| Unit cost | |
| infra. Cost | |
| Scale | 1:350 |

21 MF/DO/SD



| TYPOLOGY 22 | |
|----------------|------------------------|
| Unit size | 42m ² /unit |
| Stand size | 91m ² |
| No of bedrooms | 2 |
| FAR @ delivery | 0.92 |
| FAR @ optimum | 1.27 |
| Density | 132 units/ha |
| Unit cost | |
| infra. Cost | |
| Scale | 1:350 |

22 MF/DO/RO

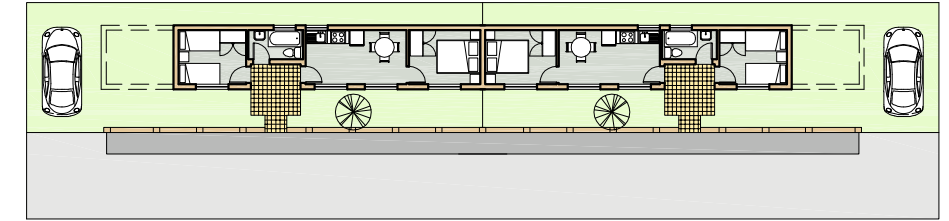
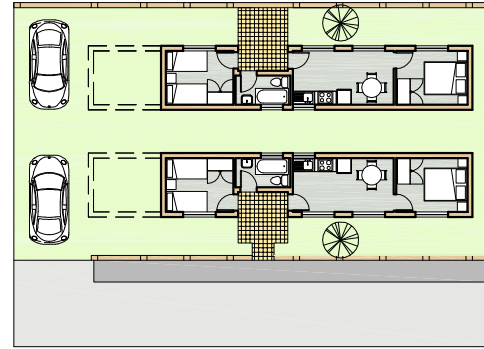
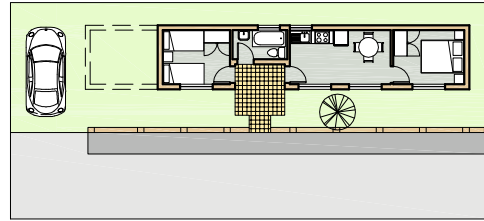
Wide Frontage (WF)

DETACHED

SEMI -DETACHED

ROW

SINGLE



| TYPOLOGY 30 | |
|----------------|---------------------|
| Unit size | 40m ² |
| Stand size | 133.4m ² |
| No of bedrooms | 2 |
| FAR @ delivery | 0.3 |
| FAR @ optimum | 0.37 |
| Density | 45 units/ha |
| Unit cost | |
| infra. Cost | |
| Scale | 1:350 |

30 WF/SI/DE

31 WF/SI/SD

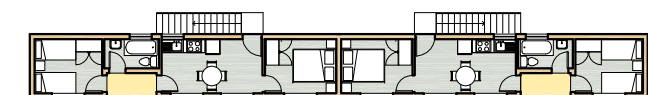
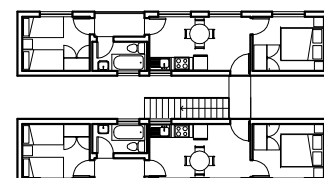
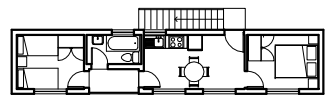
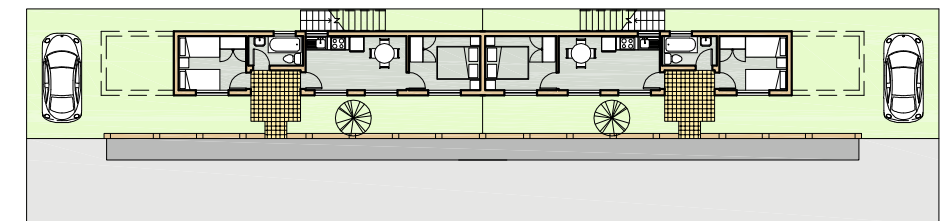
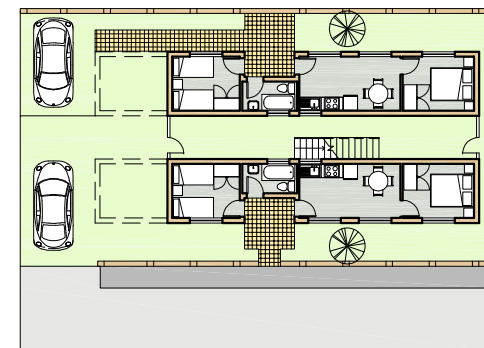
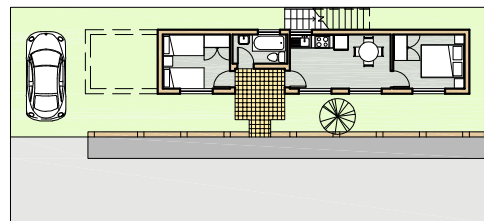
| TYPOLOGY 31 | |
|----------------|---------------------|
| Unit size | 40m ² |
| Stand size | 132.5m ² |
| No of bedrooms | 2 |
| FAR @ delivery | 0.3 |
| FAR @ optimum | 0.38 |
| Density | 45 units/ha |
| Unit cost | |
| infra. Cost | |
| Scale | 1:350 |

32 WF/SI/RO

| TYPOLOGY 32 | |
|----------------|---------------------|
| Unit size | 40m ² |
| Stand size | 126.7m ² |
| No of bedrooms | 2 |
| FAR @ delivery | 0.32 |
| FAR @ optimum | 0.39 |
| Density | 47.5units/ha |
| Unit cost | |
| infra. Cost | |
| Scale | 1:350 |

DUPLEX

DOUBLE



| TYPOLOGY 33 | |
|----------------|------------------------|
| Unit size | 40m ² /unit |
| Stand size | 133.4m ² |
| No of bedrooms | 2 |
| FAR @ delivery | 0.6 |
| FAR @ optimum | 0.76 |
| Density | 90 units/ha |
| Unit cost | |
| infra. Cost | |
| Scale | 1:350 |

33 WF/DO/DE

34 WF/DO/SD

| TYPOLOGY 34 | |
|----------------|------------------------|
| Unit size | 40m ² /unit |
| Stand size | 132.5m ² |
| No of bedrooms | 2 |
| FAR @ delivery | 0.6 |
| FAR @ optimum | 0.77 |
| Density | 90 units/ha |
| Unit cost | |
| infra. Cost | |
| Scale | 1:350 |

35 WF/DO/RO

| TYPOLOGY 35 | |
|----------------|------------------------|
| Unit size | 40m ² /unit |
| Stand size | 126.7m ² |
| No of bedrooms | 2 |
| FAR @ delivery | 0.65 |
| FAR @ optimum | 0.8 |
| Density | 95 units/ha |
| Unit cost | |
| infra. Cost | |
| Scale | 1:350 |