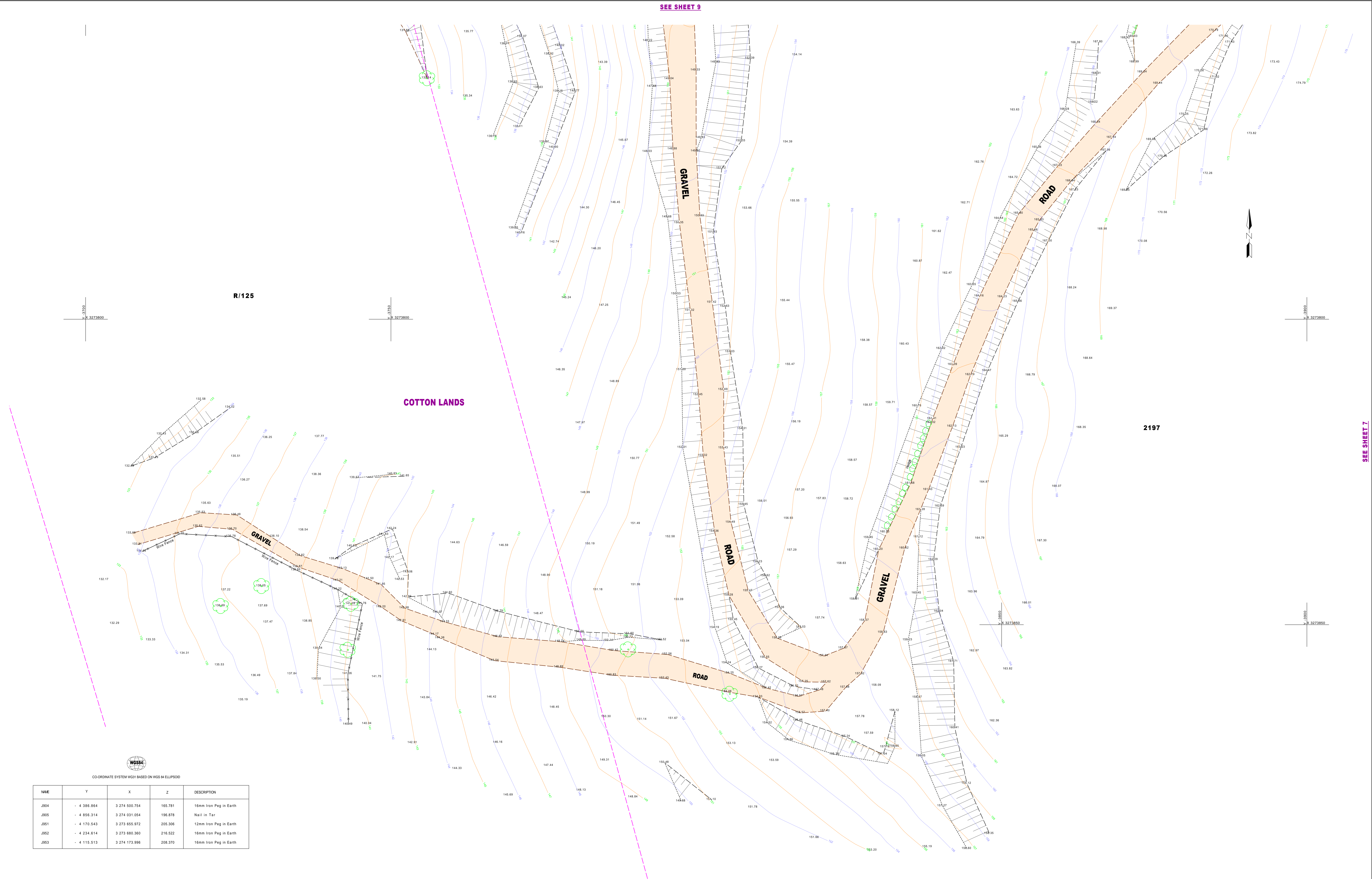


SEE SHEET 9



R/125

COTTON LANDS

2197

SEE SHEET 7



COORDINATE SYSTEM WGS1 BASED ON WGS 84 ELLIPSOID

| NAME | Y | X | Z | DESCRIPTION |
|------|-------------|---------------|---------|------------------------|
| J904 | - 4 386.864 | 3 274 500.754 | 165.781 | 16mm Iron Peg in Earth |
| J905 | - 4 856.314 | 3 274 031.054 | 196.878 | Nail in Tar |
| J951 | - 4 170.543 | 3 273 655.972 | 205.306 | 12mm Iron Peg in Earth |
| J952 | - 4 234.614 | 3 273 680.360 | 216.522 | 16mm Iron Peg in Earth |
| J953 | - 4 115.513 | 3 274 173.998 | 208.370 | 16mm Iron Peg in Earth |

SERVICES OBTAINED FROM G.I.S.

| | |
|------------|-----|
| STORMWATER | --- |
| WATER | --- |
| SEWER | --- |

