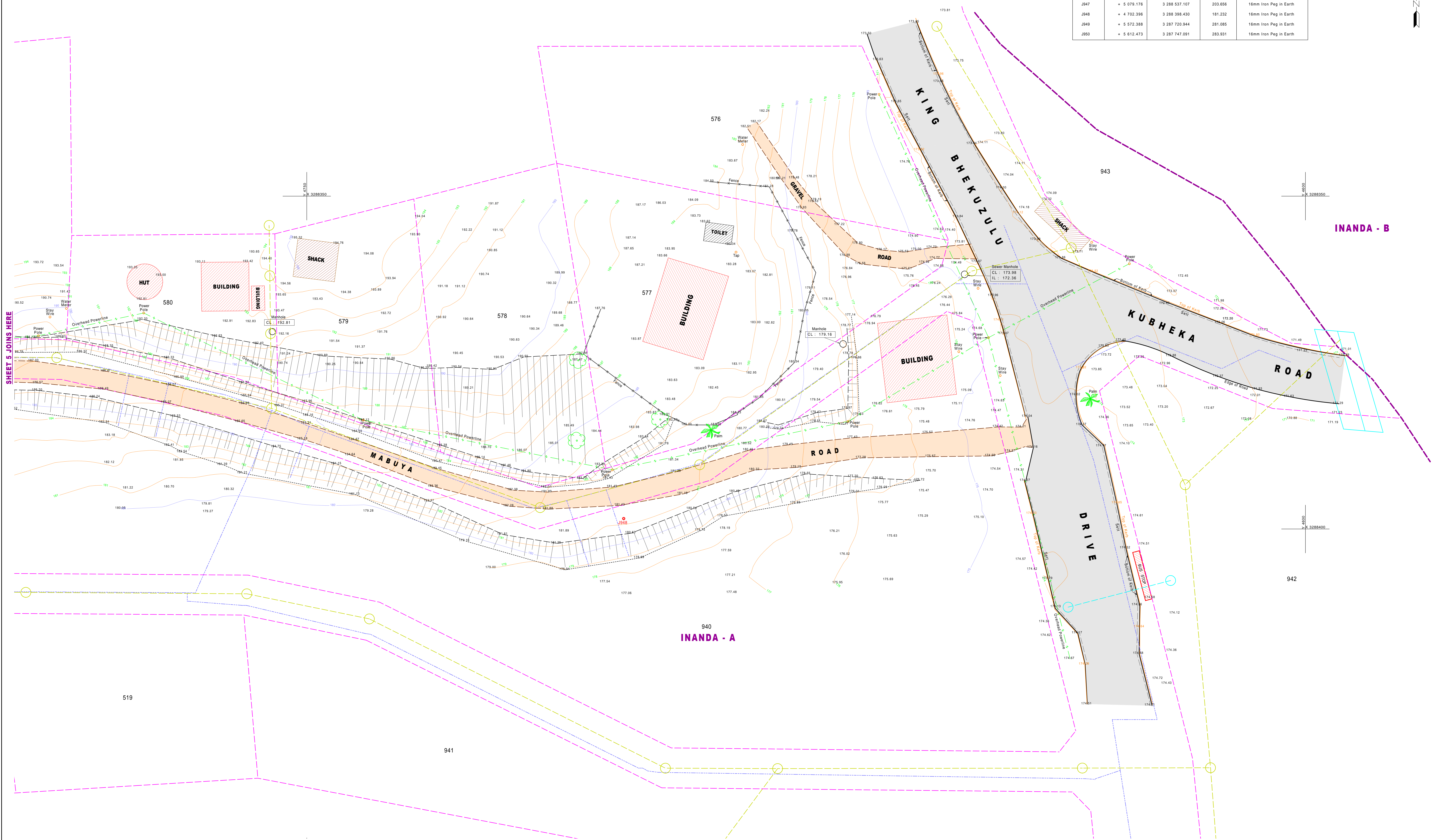
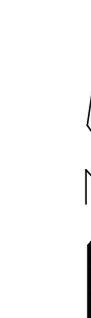




CO-ORDINATE SYSTEM WGS1984 BASED ON WGS 84 ELLIPSOID

NWE	Y	X	Z	DESCRIPTION
J945	+ 5 399.631	3 288 673.906	240.023	16mm Iron Peg in Earth
J946	+ 5 187.622	3 288 597.760	213.606	16mm Iron Peg in Earth
J947	+ 5 079.176	3 288 537.107	203.656	16mm Iron Peg in Earth
J948	+ 4 702.396	3 288 398.430	181.232	16mm Iron Peg in Earth
J949	+ 5 572.388	3 287 720.944	281.085	16mm Iron Peg in Earth
J950	+ 5 612.473	3 287 747.091	283.931	16mm Iron Peg in Earth



SHEET 5 JOINS HERE

INANDA - B

940 INANDA - A

942

519

941

SERVICES OBTAINED FROM G.I.S.	
STORMWATER	---
WATER	---
SEWER	---



ETHEKWINI MUNICIPALITY - SURVEYING AND LAND INFORMATION DEPT - ENGINEERING UNIT

DETAIL SURVEY
MABUYA ROAD - INANDA

SURVEYED BY	Firm's Name	PLAN No.	2010-102 (Sheet 5)
DRAWN BY	B. Govender	SURVEY No.	2010-102
SCALE	1:200 - A3	JOB No.	WO 1466054
DATE	March 2011	APPROVED BY	
		INDEX	